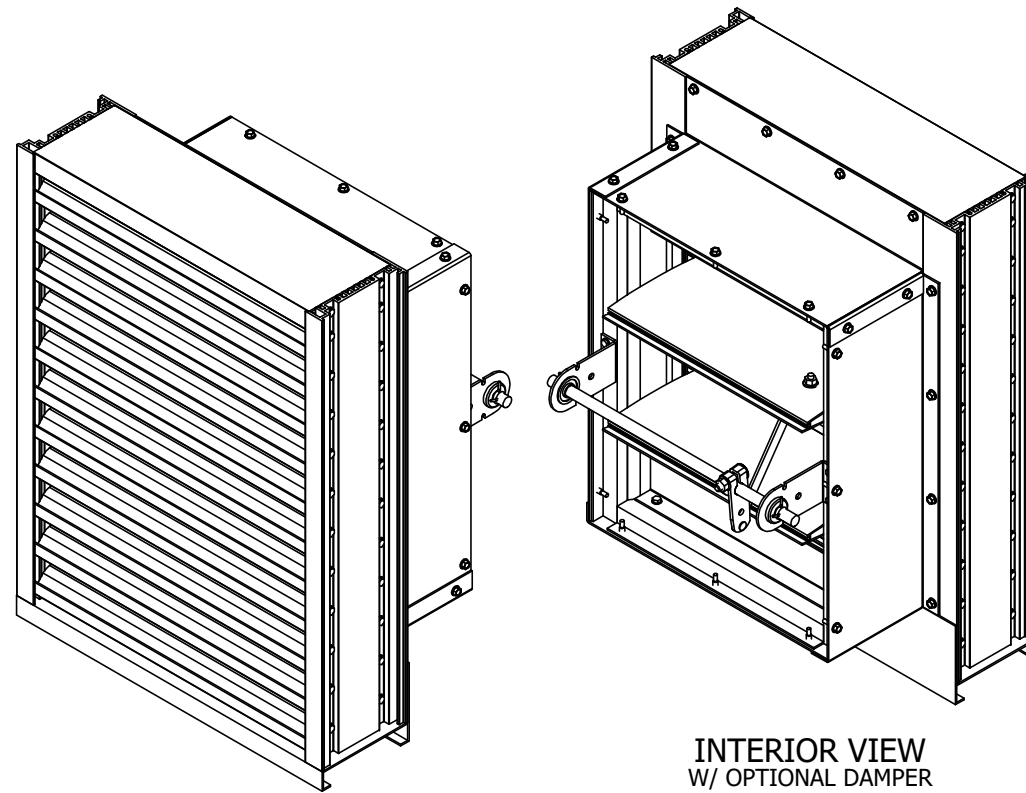


NOTES:
 1. THIS DRAWING INCLUDES INSTALLATION DETAILS TO ATTAIN MAXIMUM DESIGN PRESSURES OF ±150 PSF AS TESTED IN ACCORDANCE WITH PROTOCOLS TAS 201 (LEVEL 'E', 80 FPS), TAS 202, AND TAS 203. THE INSTALLATION OF AN OPTIONAL CD-51 DAMPER YIELDS WATER INGRESS PROTECTION AS TESTED IN ACCORDANCE WITH AMCA 550 AND TAS 100(A).

2. THIS LOUVER ASSEMBLY IS DESIGNED PER THE 2018 IBC AND SATISFIES THE TEXAS DEPARTMENT OF INSURANCE'S CRITERIA FOR PROTECTION FROM WINDBORNE DEBRIS. THE LOUVER ASSEMBLY PASSED AN IMPACT STANDARD EQUIVALENT TO MISSILE LEVEL 'E' SPECIFIED IN ASTM E 1996. THE LOUVER MAY BE INSTALLED AT ANY HEIGHT ON THE STRUCTURE AS LONG AS THE DESIGN PRESSURE RATING FOR THE ASSEMBLY IS NOT EXCEEDED.
3. UNITS OF MEASURE ARE FRACTIONAL INCHES UNLESS OTHERWISE SPECIFIED.
4. IT IS ASSUMED THAT THE LOUVER SYSTEMS DO NOT SUPPORT ANY LOADS TRANSFERRED FROM THE BUILDING CONDITION.
5. IT IS ASSUMED THAT THE BUILDING CONDITIONS ARE ADEQUATELY DESIGNED TO SUPPORT LOADS IMPARTED BY THE LOUVER SYSTEM.
6. TO PREVENT GALVANIC CORROSION, ELECTROCHEMICALLY DISSIMILAR MATERIALS IN CONTACT WITH ONE ANOTHER SHALL BE PROTECTED BY PAINT, GASKETING, OR OTHER MEANS.
7. WATER PENETRATION:
 a. WHEN LOUVERS ARE INSTALLED WITHOUT THE OPTIONAL CD-51 DAMPER, THE ROOM BEHIND THE LOUVER MUST BE DESIGNED TO DRAIN WATER PENETRATING INTO THE ROOM, AND THE ROOM MUST HOUSE WATER-RESISTANT/WATERPROOF EQUIPMENT, COMPONENTS, OR SUPPLIES.
 b. ADDITIONAL PROTECTION FROM WATER INGRESS IS NOT NECESSARY WHEN LOUVERS ARE INSTALLED WITH CD-51 DAMPERS AND THE DAMPERS ARE CLOSED.
8. OTHER BUILDING CONDITIONS THAN THOSE DENOTED MAY BE UTILIZED IF ANALYZED AND APPROVED BY A PROFESSIONAL ENGINEER.
9. MULTI-SECTION WIDE AND HIGH LOUVER SYSTEMS ARE ALLOWABLE PROVIDED THE INDIVIDUAL SECTIONS ARE SUPPORTED PER THE DETAILS ON THIS DRAWING AND A SUITABLE SUPPORT STRUCTURE IS ANALYZED AND APPROVED BY A PROFESSIONAL ENGINEER.
10. UNLESS FASTENERS ARE 300 SS, SEAL FASTENERS ATTACHING TO THE SUBSTRATE WITH LIQUID PROSOCO FLASHING OR EQUAL.



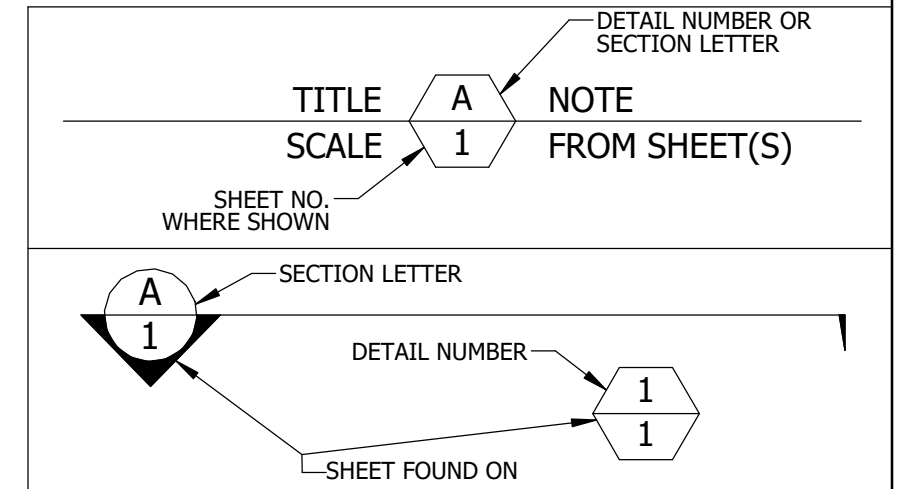
EXTERIOR VIEW
W/ OPTIONAL DAMPER

INTERIOR VIEW
W/ OPTIONAL DAMPER

W ≤ 60"	W > 60"
4 1/2"	4"

MAX DESIGN PRESSURE	MIN (W X H)	MAX (W X H)
±150 PSF	6" X 6" STANDARD	60" X 144" OR 72" X 120"
	10" X 14" W/ DAMPER	

SINGLE SECTION HIGH - UNLIMITED WIDTH	SEE SHEET #4
SINGLE SECTION WIDE - UNLIMITED HEIGHT	SEE SHEET #12



P.E. STAMP



TABLE 3
ANCHOR SCHEDULE

SUBSTRATE	LOCATION	ANCHOR TYPE	MIN. EMBEDMENT	MIN. EDGE DISTANCE	SPACING (W ≤ 60") (STANDARD)	SPACING (W > 60") (STANDARD)	SPACING (SHAPES)
CONCRETE (f'c ≥ 4000 PSI)	JAMBS	3/8" X 4" DEWALT SCREW-BOLT+ (F-7)	3 1/4"	1 5/8"	8"	6 1/2"	8"
	MULLIONS (WALL DEPTH < 12 3/8")	5/8" X 4" DEWALT SCREW-BOLT+ (F-8)	3 1/4"	1 3/4"	7"	7"	--
	MULLIONS (WALL DEPTH ≥ 12 3/8")	5/8" X 6" DEWALT SCREW-BOLT+ (F-9)	5"	5 7/8"	9"	9"	--
GROUT FILLED CMU (f'm ≥ 1500 PSI)	JAMBS	3/8" X 4" DEWALT SCREW-BOLT+ (F-7)	3 1/4"	1 1/2" (1 3/4" FOR SHAPES)	5"	4"	5 1/2"
	MULLIONS	3/8" X 4" DEWALT SCREW-BOLT+ (F-7)	3 1/4"	1 1/2"	4"	4"	--
STRUCTURAL STEEL (MIN. 3/16" THICK, Fy ≥ 36 KSI)	JAMBS	1/4" X 1" SELF-DRILLING SCREW (F-11)	FULL	1/2"	8"	6 1/2"	10"
	MULLIONS	1/4" X 1" SELF-DRILLING SCREW (F-11); TWELVE (12) FASTENERS PER CONNECTION	FULL	1/2"	3/4"	3/4"	--
STEEL STUD (MIN. 12 GA, Fy ≥ 50 KSI)	JAMBS	1/4" X 1" SELF-DRILLING SCREW (F-11)	FULL	1/2"	8"	6 1/2"	10"
	MULLIONS	1/4" X 1" SELF-DRILLING SCREW (F-11); TWELVE (12) FASTENERS PER CONNECTION	FULL	1/2"	3/4"	3/4"	--
WOOD (S.G. ≥ 0.43)	JAMBS	1/2" X 3 1/2" LAG BOLT WITH FLAT WASHER (F-12)	3"	2"	9"	8"	10"
	MULLIONS	1/2" X 3 1/2" LAG BOLT WITH FLAT WASHER (F-12); TWELVE (12) ANCHORS PER CONNECTION	3"	2"	2 1/2"	2 1/2"	--

RICE
ENGINEERING
 105 School Creek Trail
 Lubbock, TX 79417
 Phone: (800)-617-1042
 Fax: (800)-617-1100
 www.rice-eng.com

This Certification is limited to the structural design of the structural components of this louver system. It does NOT include responsibility for:
 • Design of air and water infiltration prevention
 • The manufacture, assembly, or installation of the system.
 • Quantities of materials or dimensional accuracy of drawings.
 • Blank-off Panels.

UNLESS OTHERWISE SPECIFIED
DIMENSION ARE IN INCHES.

TOLERANCE UNLESS NOTED:
 X.X ±0.060
 X.XX ±0.030
 X.XXX ±0.010
 ANGLE ±1°
 FRACTION ±1/16

MAX HOLE BREAKOUT:
15% OF MATERIAL THICKNESS

5101 Blue Mound Road
Fort Worth, Texas 76106
Phone: 817-509-2300
Fax: 817-831-3110

THIRD ANGLE PROJECTION

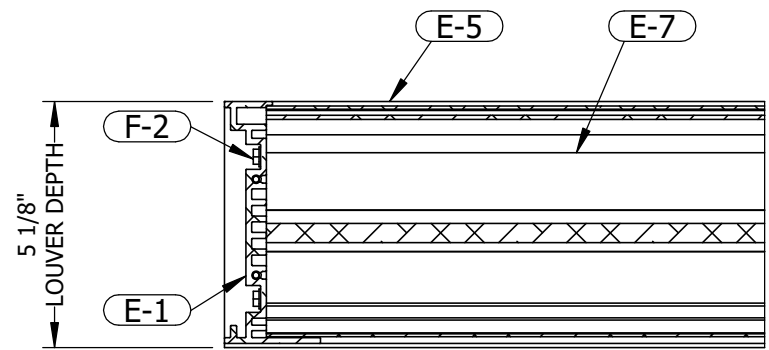
PCI INDUSTRIES DOING BUSINESS AS
POTTORFF

DRAWING DESCR: COVER SHEET				
PROJECT: ECD-545-MD				
LOCATION:				
CUSTOMER:				
PROJ. MGR.:		DRAWN BY: JMR		
DATE: 6/28/2022	CHK'D BY: NW	ORDER NUMBER	P.O. NUMBER	DRAWING NUMBER
SHEET: 1 of 19	SCALE: NONE			ECD-545-MD TDI

GENERAL LOUVER ASSEMBLY

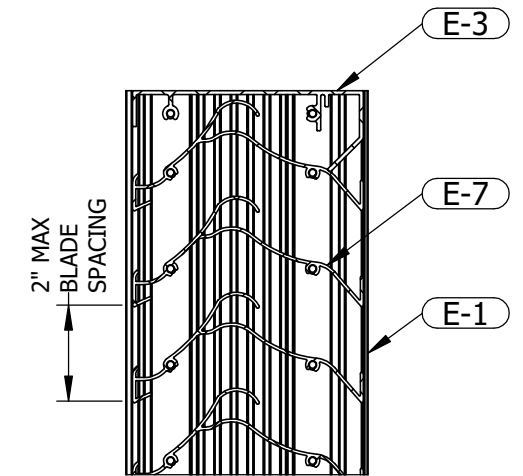


SECTION VIEW **B** GENERAL ASSEMBLY
SCALE: 3/4" = 1'-0" **2**



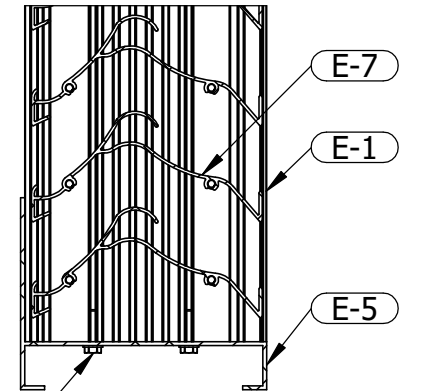
CONSTRUCTION **1** DETAIL
3"=1'-0" **2**

IN FLANGED CONFIGURATIONS:
E-2 WILL BE USED IN PLACE OF E-1
E-6 WILL BE USED IN PLACE OF E-5



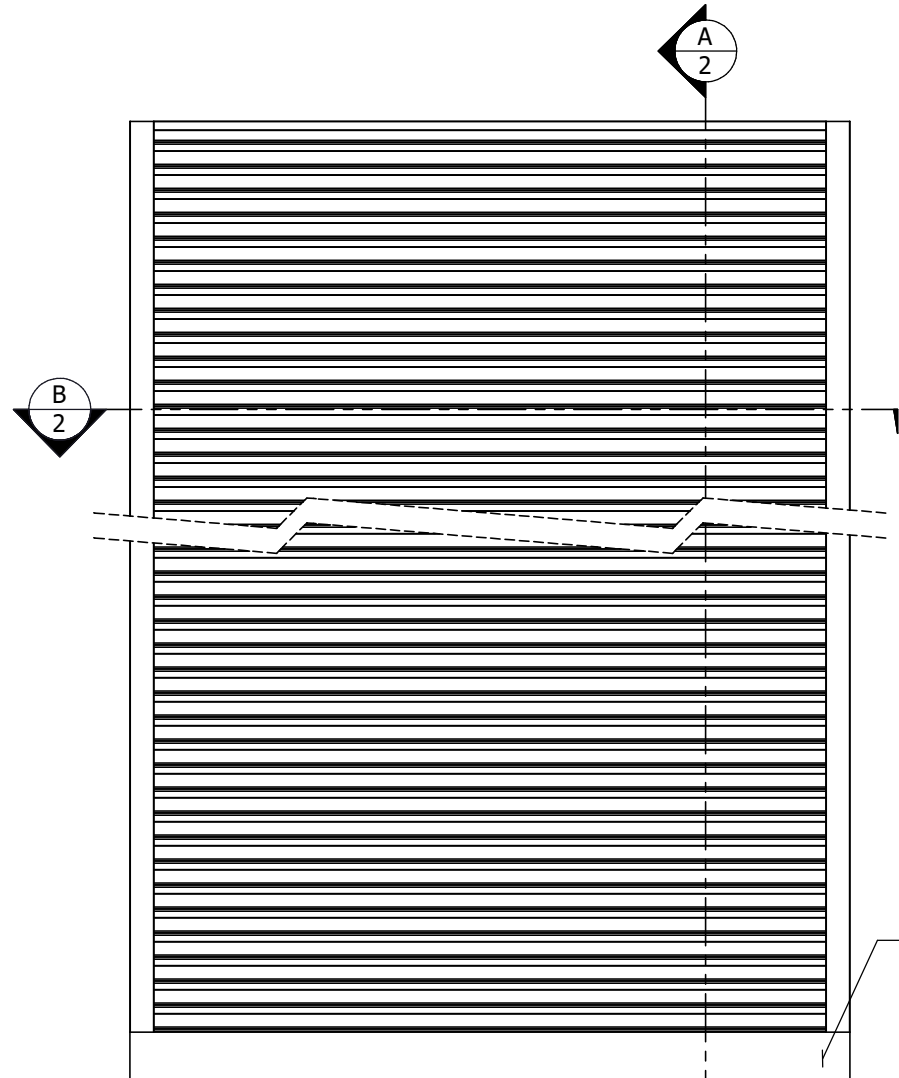
CONSTRUCTION **2** DETAIL
3"=1'-0" **2**

IN FLANGED CONFIGURATIONS:
E-2 WILL BE USED IN PLACE OF E-1
E-4 WILL BE USED IN PLACE OF E-3

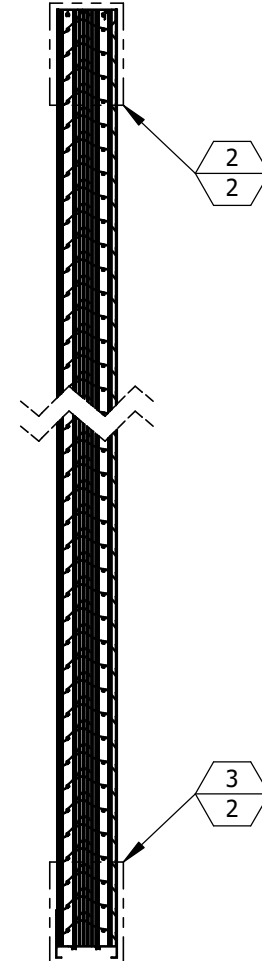


CONSTRUCTION **3** DETAIL
3"=1'-0" **2**

IN FLANGED CONFIGURATIONS:
E-2 WILL BE USED IN PLACE OF E-1
E-6 WILL BE USED IN PLACE OF E-5



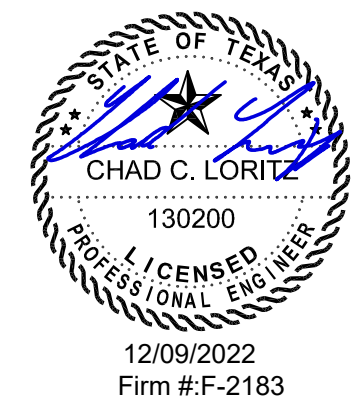
INTERIOR ELEVATION



ENGRAVED LABEL DETAIL
PCI Industries LLC DBA Miami Dade County
POTTORFF Product Control
Ft Worth TX Approved
SO #123456

SECTION VIEW **A** GENERAL ASSEMBLY
3/4"=1'-0" **2**

P.E. STAMP



I:\Engineering Library\ECN-EIN\2022\ECN 22-0068 - Create TDI Versions of MD Documentation - ECD, ECV, EDV-545-MD\

REV.	DESCRIPTION	DATE	DRAWN BY
1	REVISE NOTE 2	12/8/2022	JMR
0	INITIAL RELEASE	6/28/2022	JMR

UNLESS OTHERWISE SPECIFIED
DIMENSION ARE IN INCHES.
TOLERANCE UNLESS NOTED:
X.X ±0.060
X.XX ±0.030
X.XXX ±0.010
ANGLE ±1°
FRACTION ±1/16
MAX HOLE BREAKOUT:
15% OF MATERIAL THICKNESS

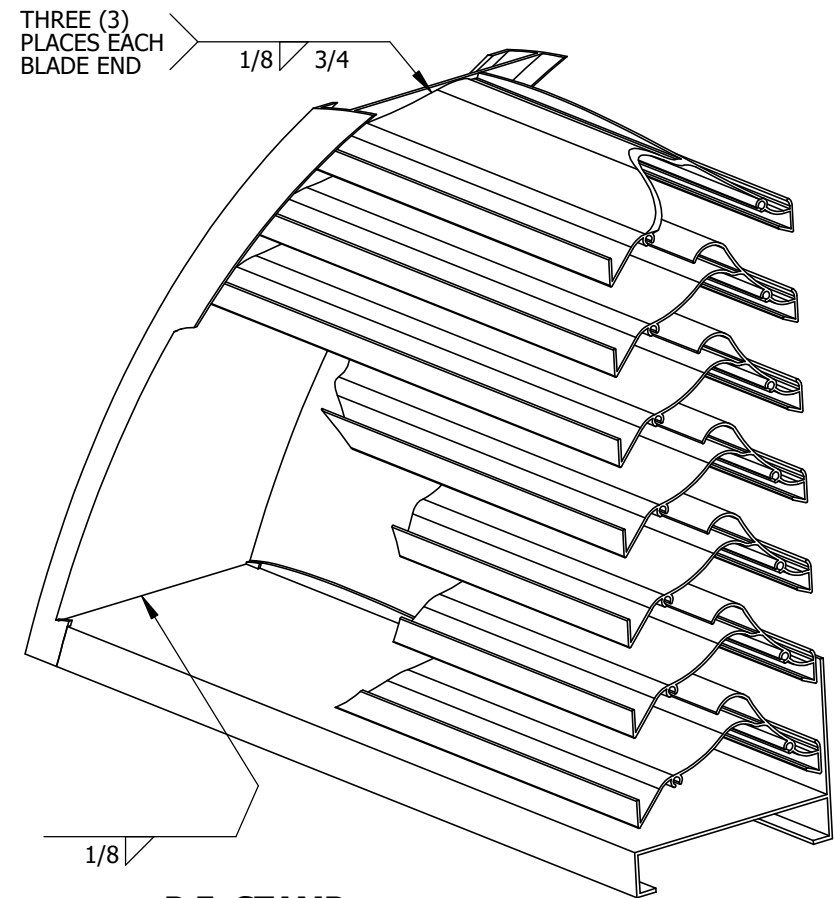
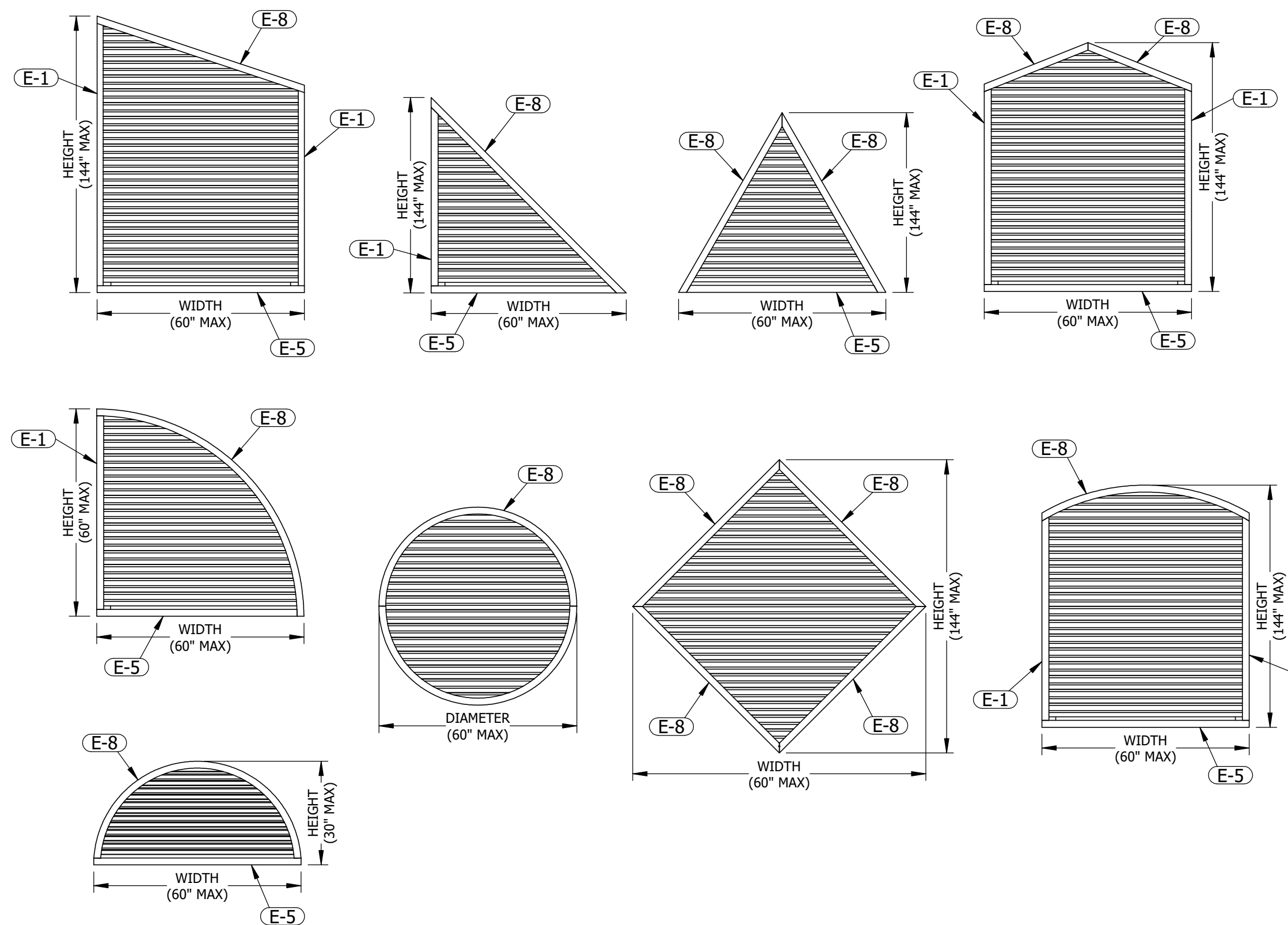
5101 Blue Mound Road
Fort Worth, Texas 76106
Phone: 817-509-2300
Fax: 817-831-3110
THIRD ANGLE PROJECTION

PCI INDUSTRIES DOING BUSINESS AS
POTTORFF

DRAWING DESCR: GENERAL LOUVER ASSEMBLY				
PROJECT: ECD-545-MD				
LOCATION:				
CUSTOMER:				
PROJ. MGR.:		DRAWN BY: JMR		
DATE: 6/28/2022	CHK'D BY: NW	ORDER NUMBER	P.O. NUMBER	DRAWING NUMBER
SHEET: 2 of 19	SCALE: 3/4"=1'-0"			ECD-545-MD TDI

I:\Engineering Library\ECN-EIN\2022\ECN 22-0068 - Create TDI Versions of MD Documentation - ECD_ECV_EDV-545-MD\

SHAPED LOUVER DETAILS



P.E. STAMP



- NOTES:
 1. SHAPED LOUVER DIMENSIONS WILL NOT EXCEED MAX SINGLE SECTION SIZES PER TABLE 1, SHEET 1.
 2. SEE SHEETS 11-13 FOR SHAPED LOUVER INSTALLATION DETAILS

UNLESS OTHERWISE SPECIFIED DIMENSION ARE IN INCHES.
 TOLERANCE UNLESS NOTED:
 X.X ±0.060
 X.XX ±0.030
 X.XXX ±0.010
 ANGLE ±1°
 FRACTION ±1/16
 MAX HOLE BREAKOUT:
 15% OF MATERIAL THICKNESS

5101 Blue Mound Road
 Fort Worth, Texas 76106
 Phone: 817-509-2300
 Fax: 817-831-3110

THIRD ANGLE PROJECTION

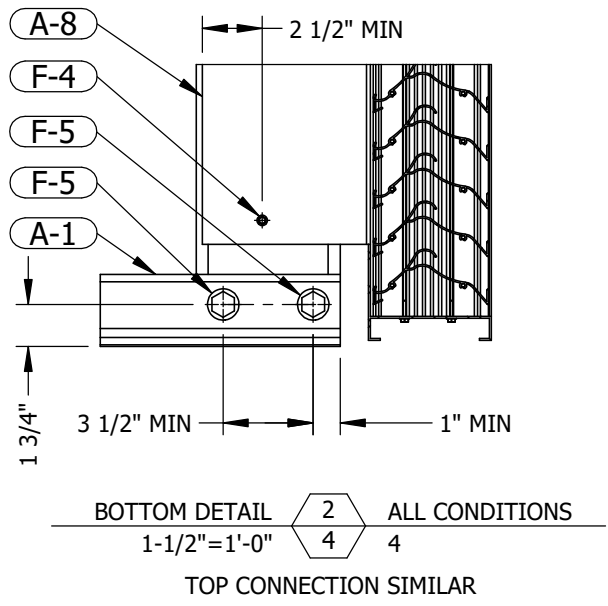
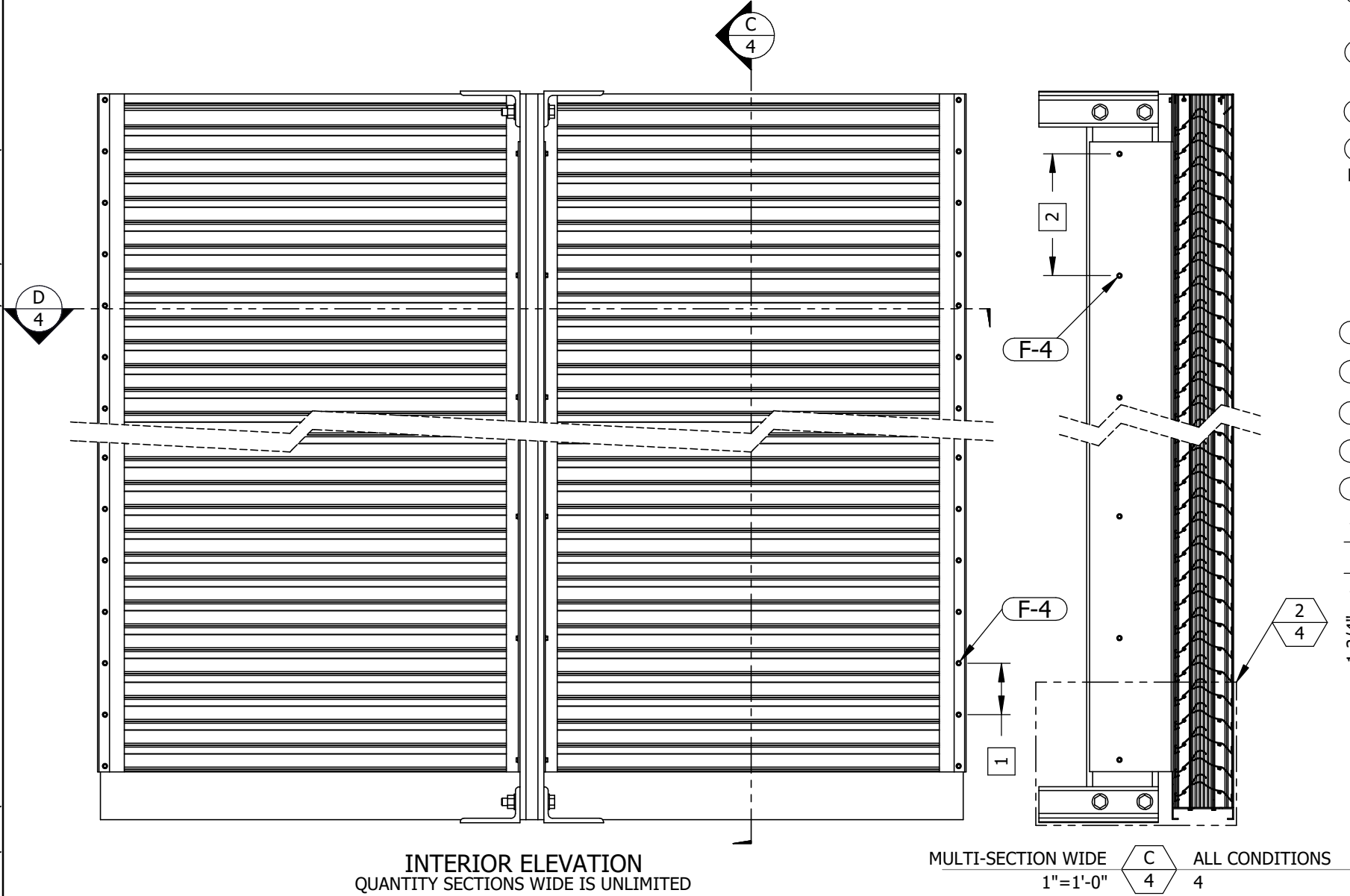
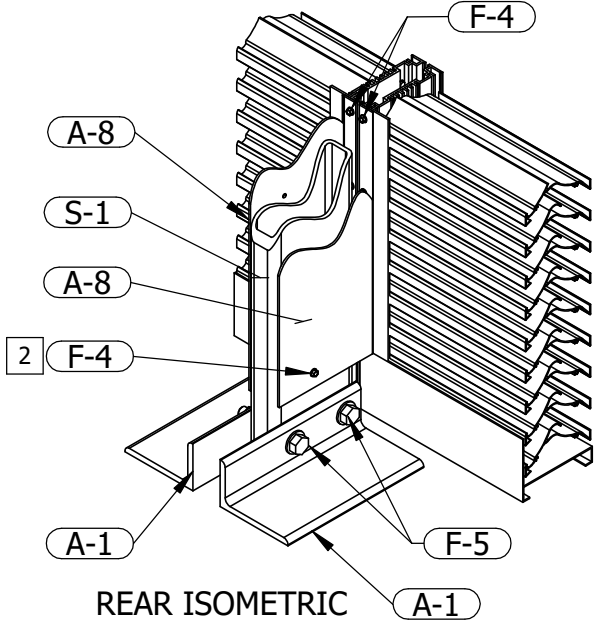
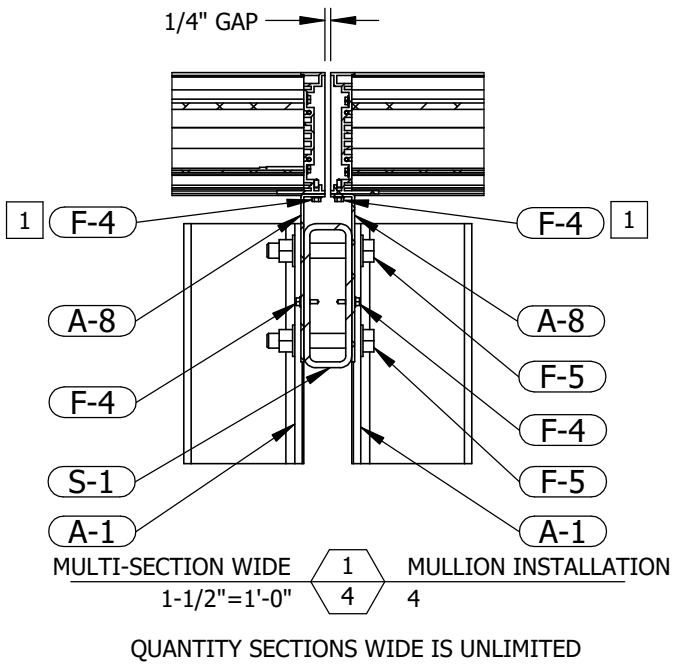
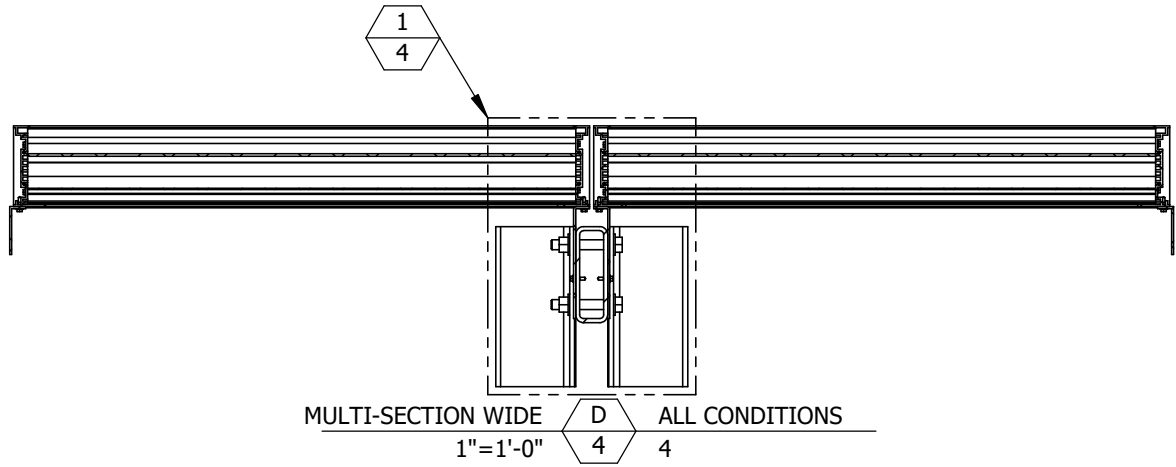
PCI INDUSTRIES DOING BUSINESS AS

POTTORFF

DRAWING DESCR: SHAPED LOUVER DETAILS				
PROJECT: ECD-545-MD				
LOCATION:				
CUSTOMER:				
PROJ. MGR.:		DRAWN BY: JMR		
DATE: 6/28/2022	CHK'D BY: NW	ORDER NUMBER	P.O. NUMBER	DRAWING NUMBER
SHEET: 3 of 19	SCALE: NONE			ECD-545-MD TDI

1	REVISE NOTE 2	12/8/2022	JMR
0	INITIAL RELEASE	6/28/2022	JMR
REV.	DESCRIPTION	DATE	DRAWN BY

GENERAL MULLION DETAILS



- NOTES:
- SEE TABLE 4 ON SHEET 1 FOR MAX FASTENER SPACING.
 - 10" MAX O.C. FOR SECTIONS ≤ 60" WIDE.
9" MAX O.C. FOR SECTIONS > 60" WIDE.

P.E. STAMP

12/09/2022
Firm #: F-2183

I:\Engineering Library\ECN-EIN\2022\ECN 22-0068 - Create TDI Versions of MD Documentation - ECD, ECV, EDV-545-MD\

REV.	DESCRIPTION	DATE	DRAWN BY
1	REVISE NOTE 2	12/8/2022	JMR
0	INITIAL RELEASE	6/28/2022	JMR

UNLESS OTHERWISE SPECIFIED DIMENSION ARE IN INCHES.

TOLERANCE UNLESS NOTED:
 X.X ±0.060
 X.XX ±0.030
 X.XXX ±0.010
 ANGLE ±1°
 FRACTION ±1/16

MAX HOLE BREAKOUT:
 15% OF MATERIAL THICKNESS

5101 Blue Mound Road
 Fort Worth, Texas 76106
 Phone: 817-509-2300
 Fax: 817-831-3110

THIRD ANGLE PROJECTION

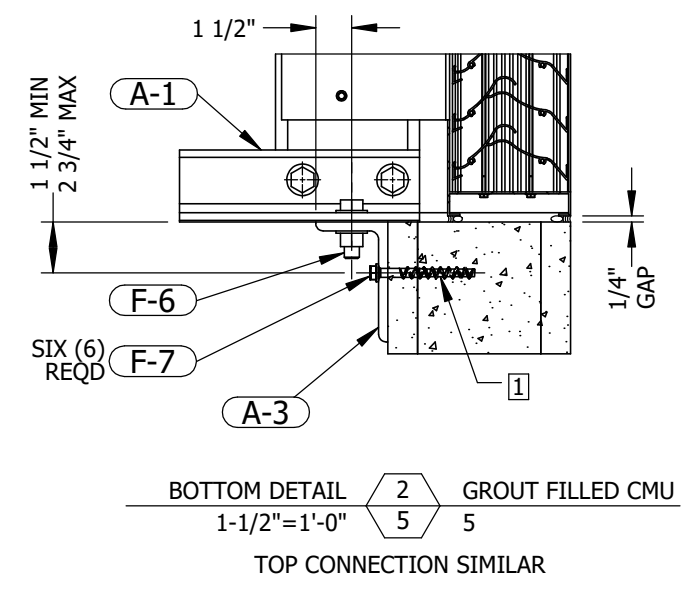
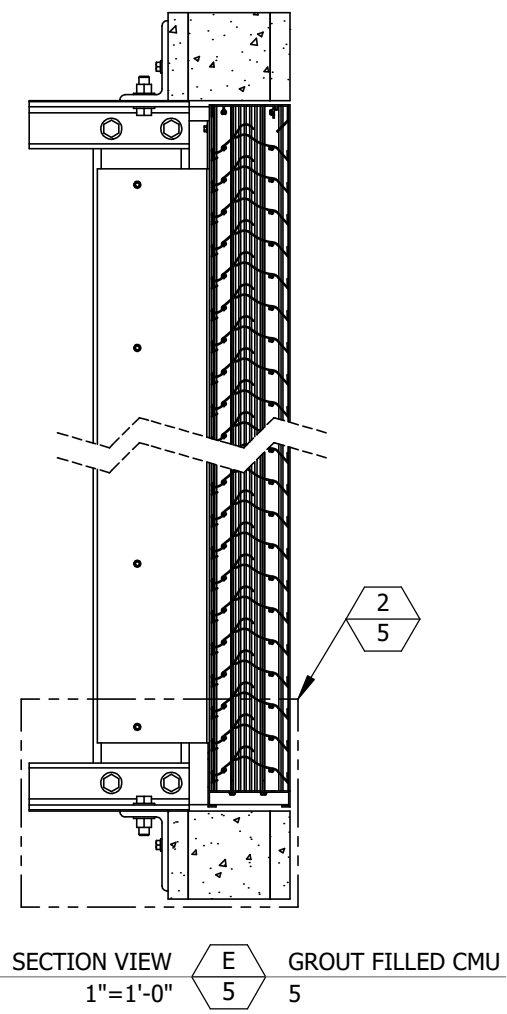
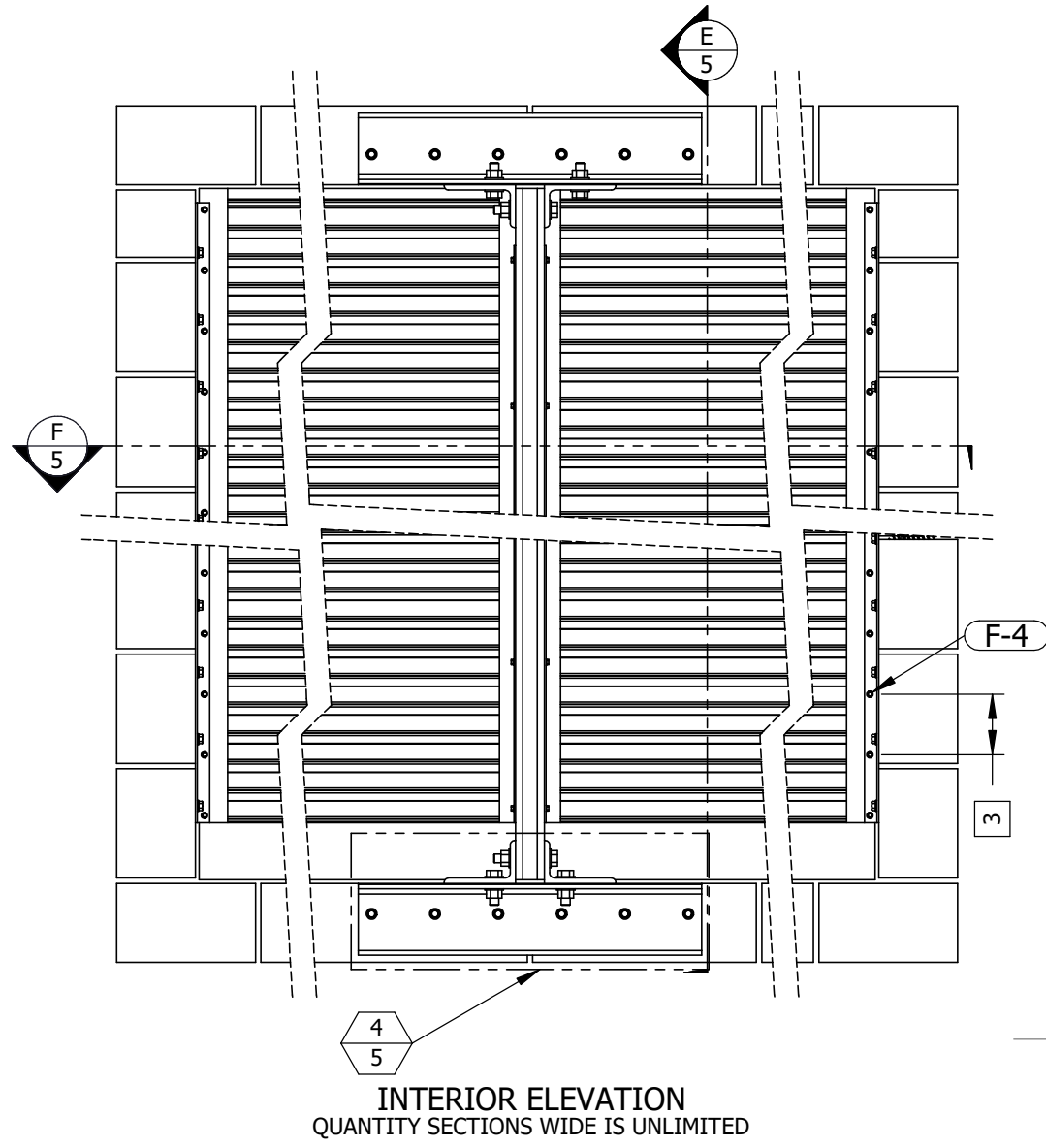
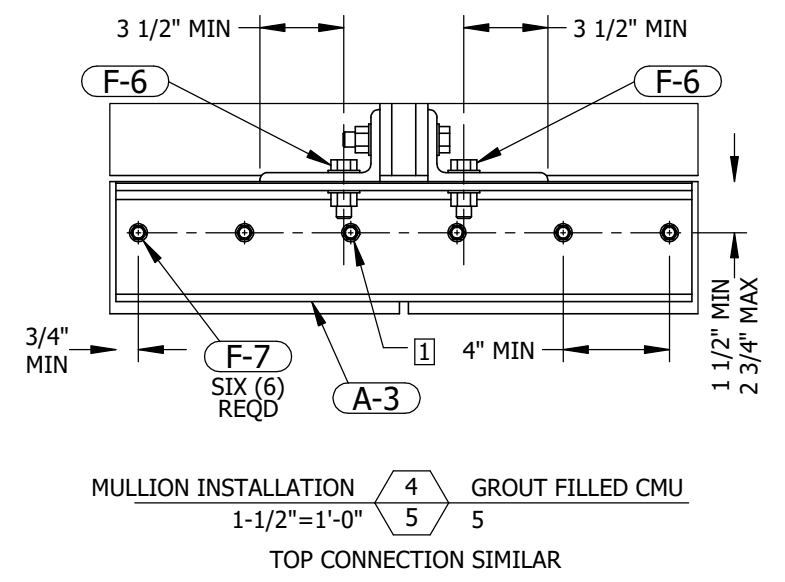
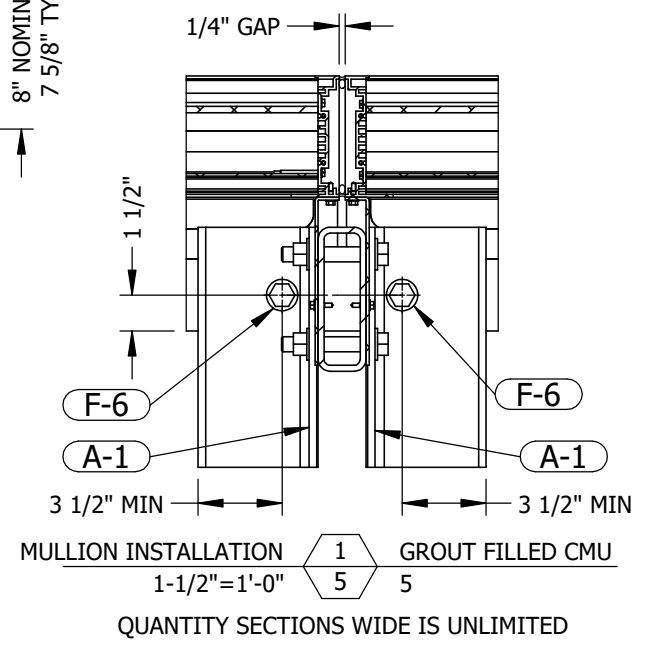
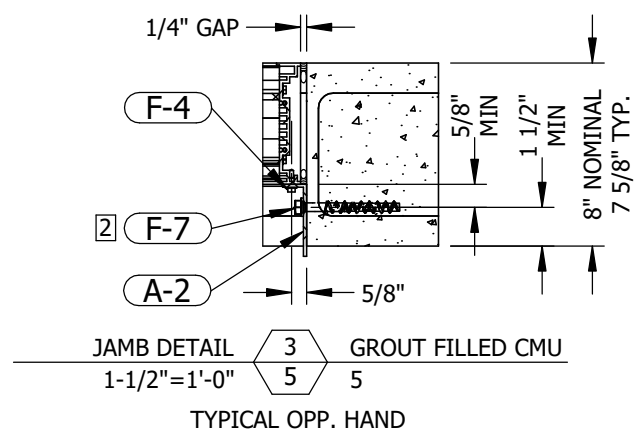
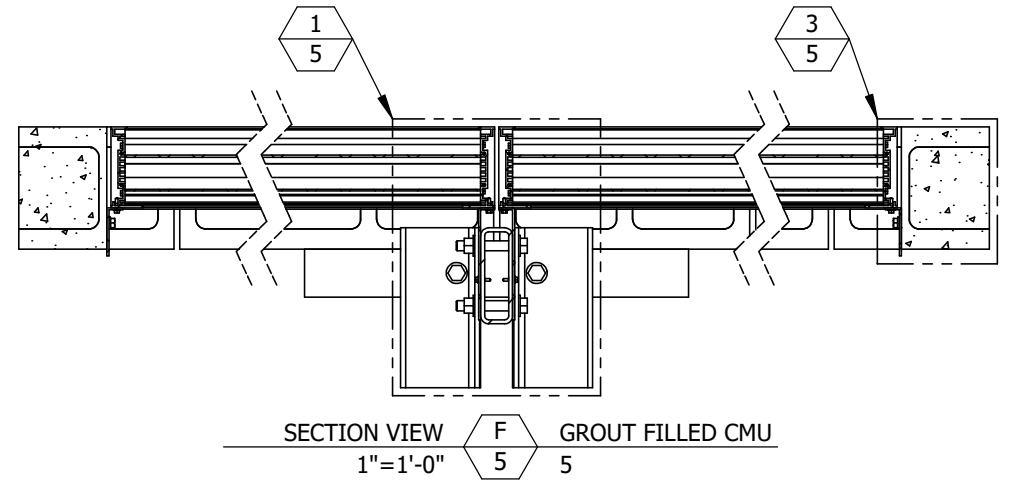
PCI INDUSTRIES DOING BUSINESS AS

POTTORFF

DRAWING DESCR: GENERAL MULLION DETAILS			
PROJECT: ECD-545-MD			
LOCATION:			
CUSTOMER:			
PROJ. MGR.:		DRAWN BY: JMR	
DATE: 6/28/2022	CHK'D BY: NW	ORDER NUMBER	P.O. NUMBER
SHEET: 4 of 19		SCALE: 1"=1'-0"	
			DRAWING NUMBER ECD-545-MD TDI

I:\Engineering Library\ECN-EIN\2022\ECN 22-0068 - Create TDI Versions of MD Documentation - ECD_ECV_EDV-545-MD

GROUT FILLED CMU CONDITION



P.E. STAMP

STATE OF TEXAS
CHAD C. LORITZ
130200
LICENSED PROFESSIONAL ENGINEER
12/09/2022
Firm #: F-2183

- NOTES:
 1 NO ANCHOR MAY BE LOCATED CLOSER THAN 1-1/4" TO A VERTICAL (HEAD) JOINT BETWEEN CMU BLOCKS.
 2 SEE TABLE 3 ON SHEET 1 FOR ANCHOR SPACING.
 3 SEE TABLE 4 ON SHEET 1 FOR FASTENER SPACING.

UNLESS OTHERWISE SPECIFIED DIMENSION ARE IN INCHES.
 TOLERANCE UNLESS NOTED:
 X.X ±0.060
 X.XX ±0.030
 X.XXX ±0.010
 ANGLE ±1°
 FRACTION ±1/16
 MAX HOLE BREAKOUT: 15% OF MATERIAL THICKNESS

5101 Blue Mound Road
 Fort Worth, Texas 76106
 Phone: 817-509-2300
 Fax: 817-831-3110

THIRD ANGLE PROJECTION

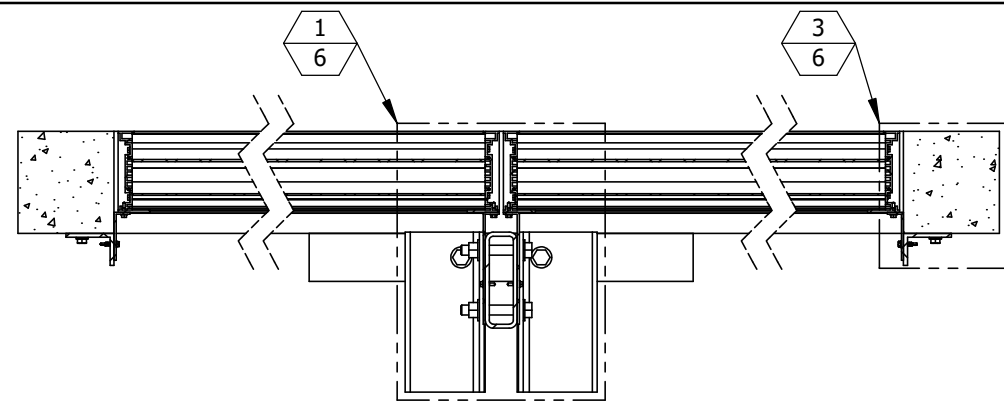
PCI INDUSTRIES DOING BUSINESS AS

POTTORFF

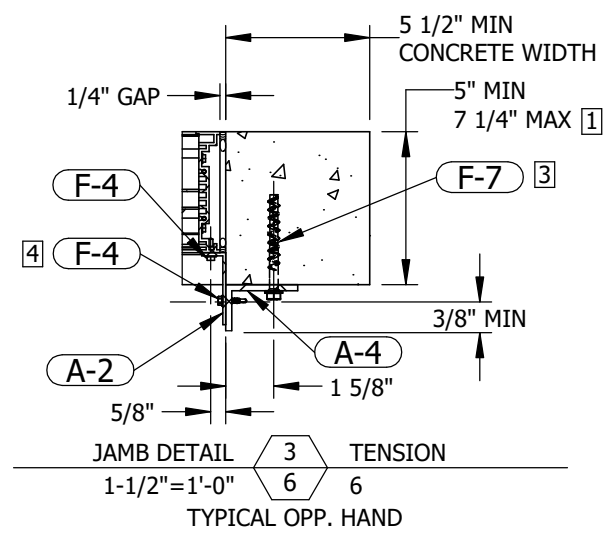
DRAWING DESCR: GROUT FILLED CMU CONDITION				
PROJECT: ECD-545-MD				
LOCATION:				
CUSTOMER:				
PROJ. MGR.:		DRAWN BY: JMR		
DATE: 6/28/2022	CHK'D BY: NW	ORDER NUMBER	P.O. NUMBER	DRAWING NUMBER
SHEET: 5 of 19	SCALE: 1"=1'-0"			ECD-545-MD TDI

REV.	DESCRIPTION	DATE	DRAWN BY
1	REVISE NOTE 2	12/8/2022	JMR
0	INITIAL RELEASE	6/28/2022	JMR

I:\Engineering Library\ECN-EIN\2022\ECN 22-0068 - Create TDI Versions of MD Documentation - ECD, ECV, EDV-545-MD

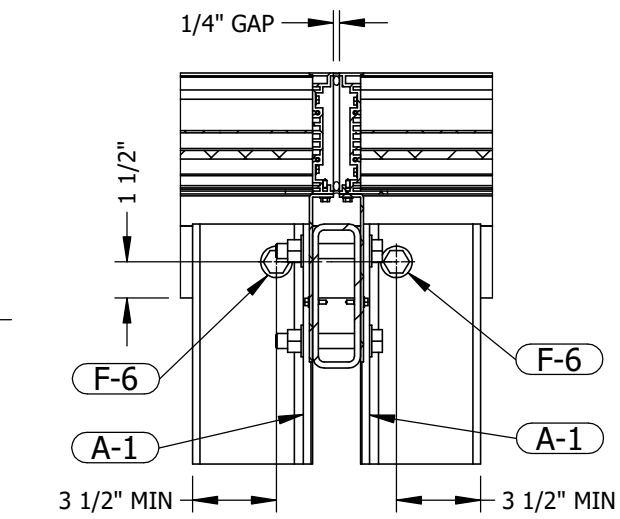


SECTION VIEW **H** TENSION
1"=1'-0" **6** 6

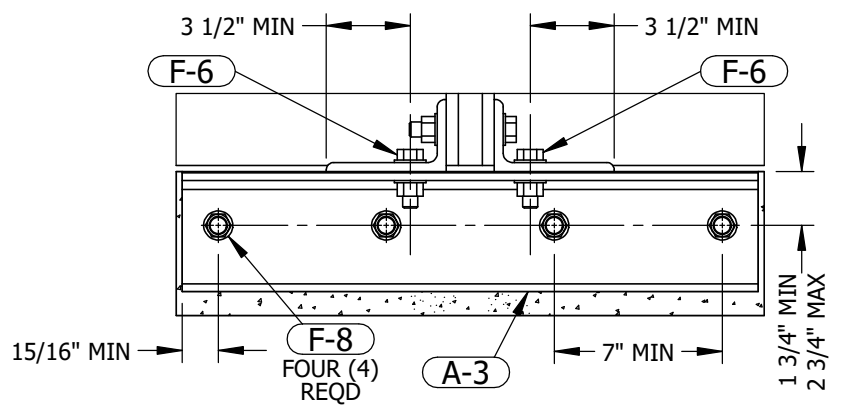


JAMB DETAIL **3** TENSION
1-1/2"=1'-0" **6** 6
TYPICAL OPP. HAND

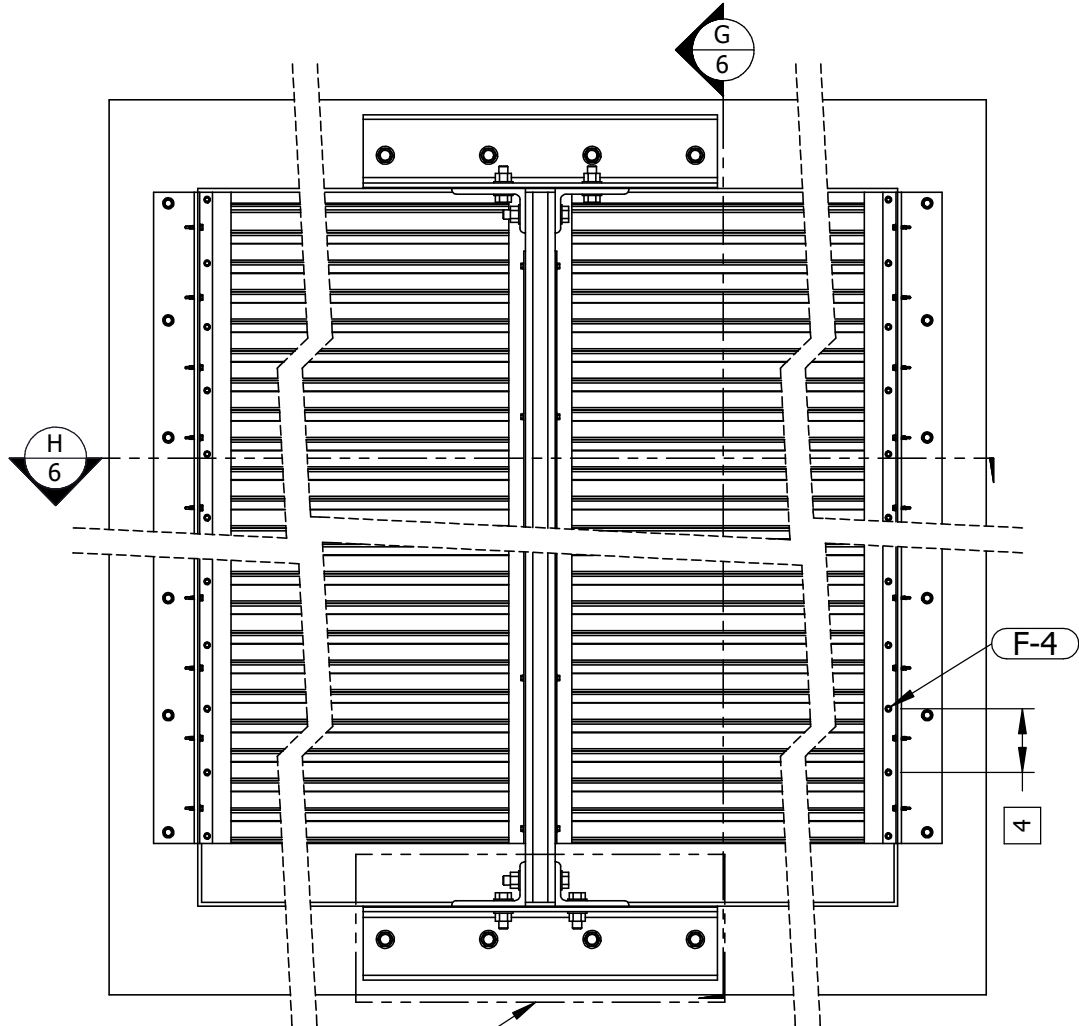
CONCRETE CONDITION TENSION CONNECTION



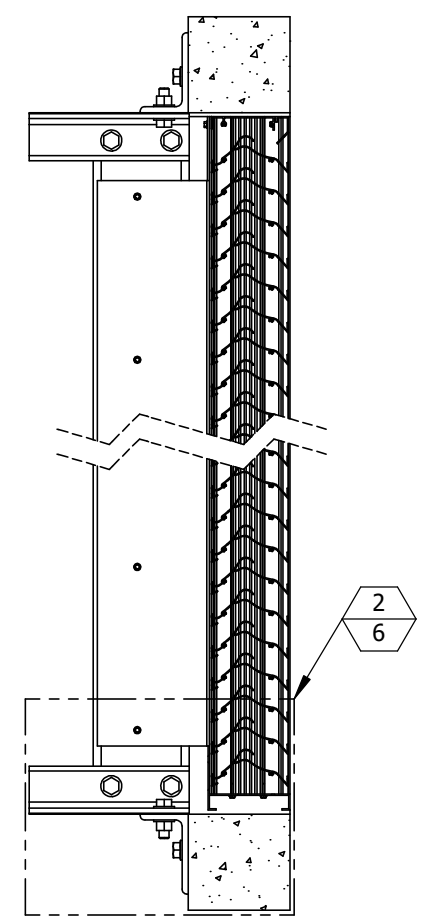
MULLION INSTALLATION **1** TENSION
1-1/2"=1'-0" **6** 6
QUANTITY SECTIONS WIDE IS UNLIMITED



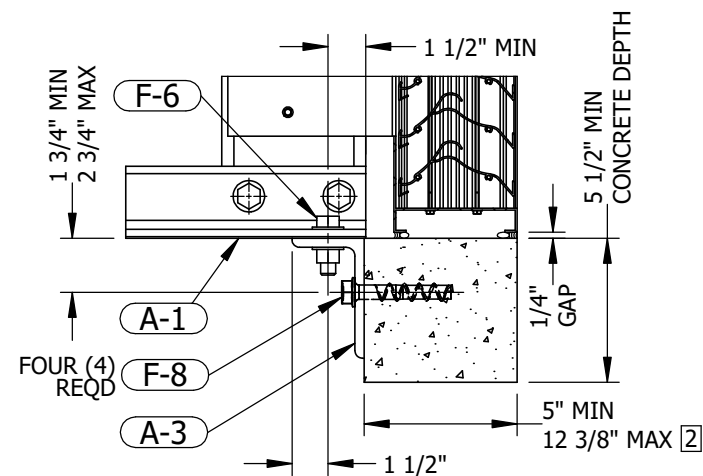
MULLION INSTALLATION **4** TENSION
1-1/2"=1'-0" **6** 6
TOP CONNECTION SIMILAR



INTERIOR ELEVATION
QUANTITY SECTIONS WIDE IS UNLIMITED



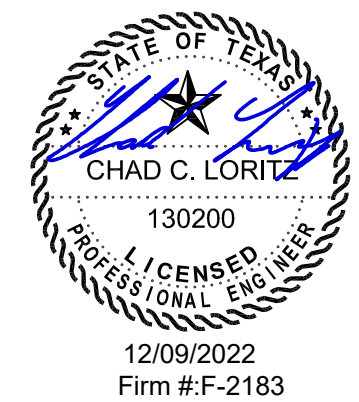
SECTION VIEW **G** TENSION
1"=1'-0" **6** 6



BOTTOM DETAIL **2** TENSION
1-1/2"=1'-0" **6** 6
TOP CONNECTION SIMILAR

- NOTES:
- 1 SEE SHEET 7 FOR SHEAR CONNECTION DETAILS WHEN CONCRETE CONDITION AT JAMB > 7 1/4" THICK.
 - 2 SEE SHEET 7 FOR SHEAR CONNECTION DETAILS WHEN CONCRETE CONDITION AT MULLION > 12 3/8" THICK.
 - 3 SEE TABLE 3 ON SHEET 1 FOR ANCHOR SPACING.
 - 4 SEE TABLE 4 ON SHEET 1 FOR FASTENER SPACING.

P.E. STAMP



UNLESS OTHERWISE SPECIFIED DIMENSION ARE IN INCHES.
TOLERANCE UNLESS NOTED:
X.X ±0.060
X.XX ±0.030
X.XXX ±0.010
ANGLE ±1°
FRACTION ±1/16
MAX HOLE BREAKOUT:
15% OF MATERIAL THICKNESS

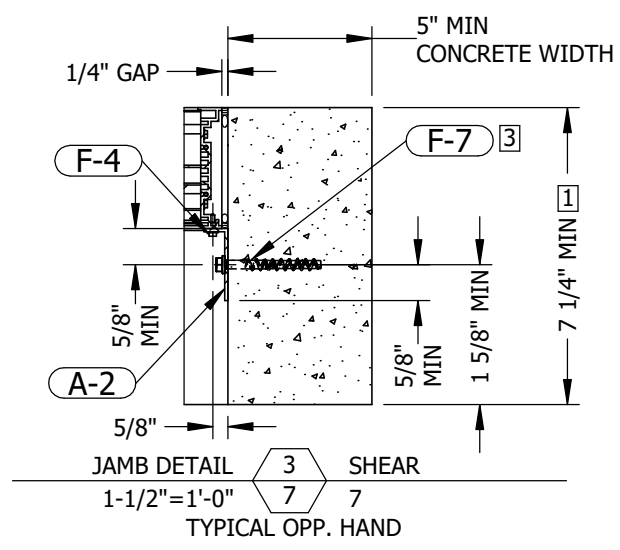
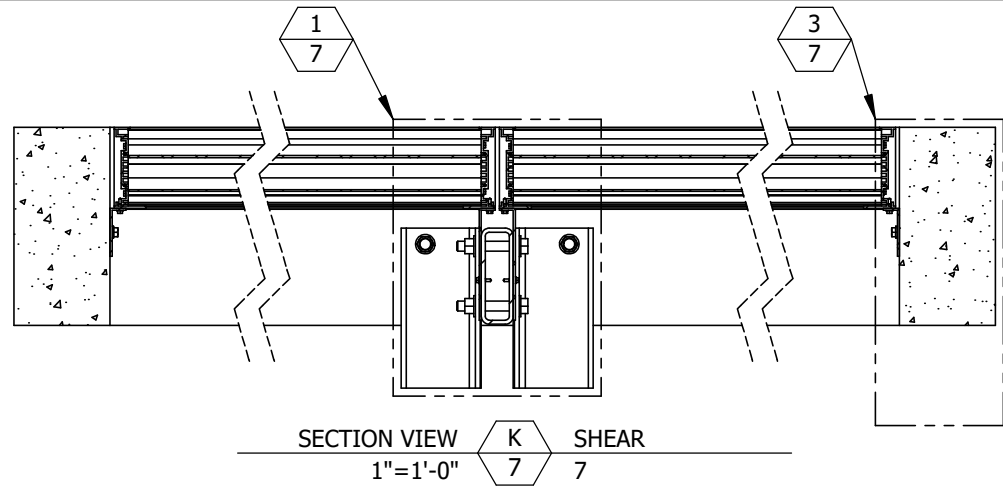
5101 Blue Mound Road
Fort Worth, Texas 76106
Phone: 817-509-2300
Fax: 817-831-3110
THIRD ANGLE PROJECTION



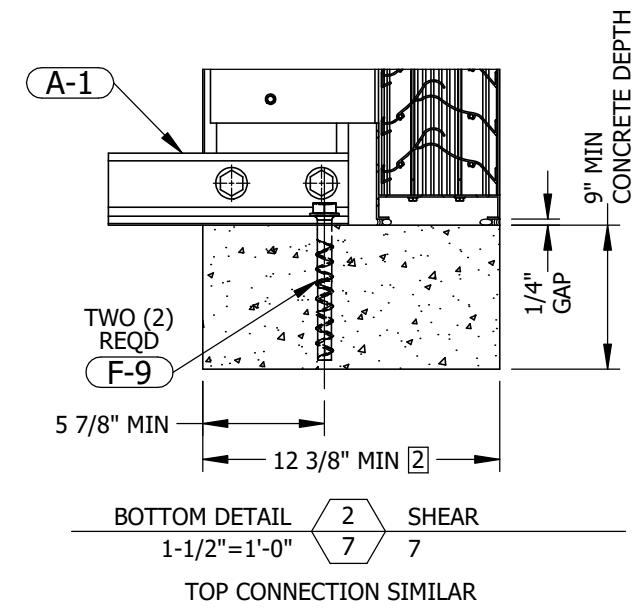
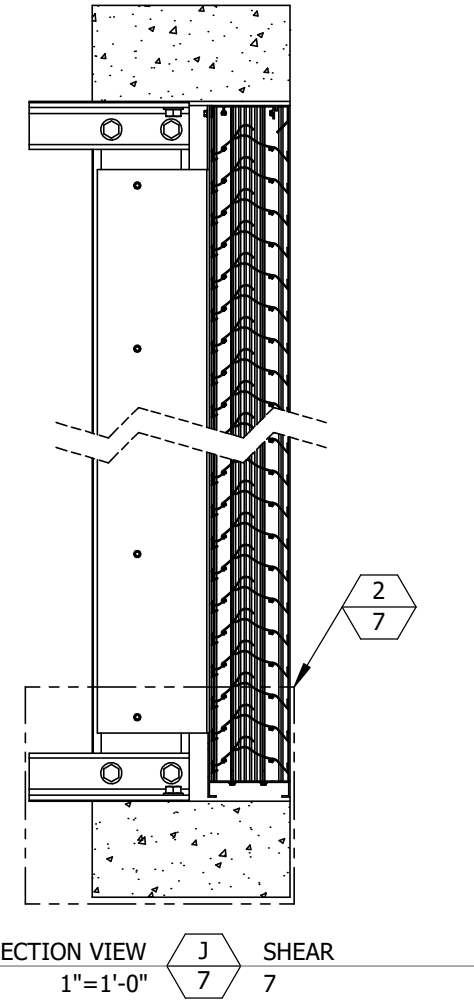
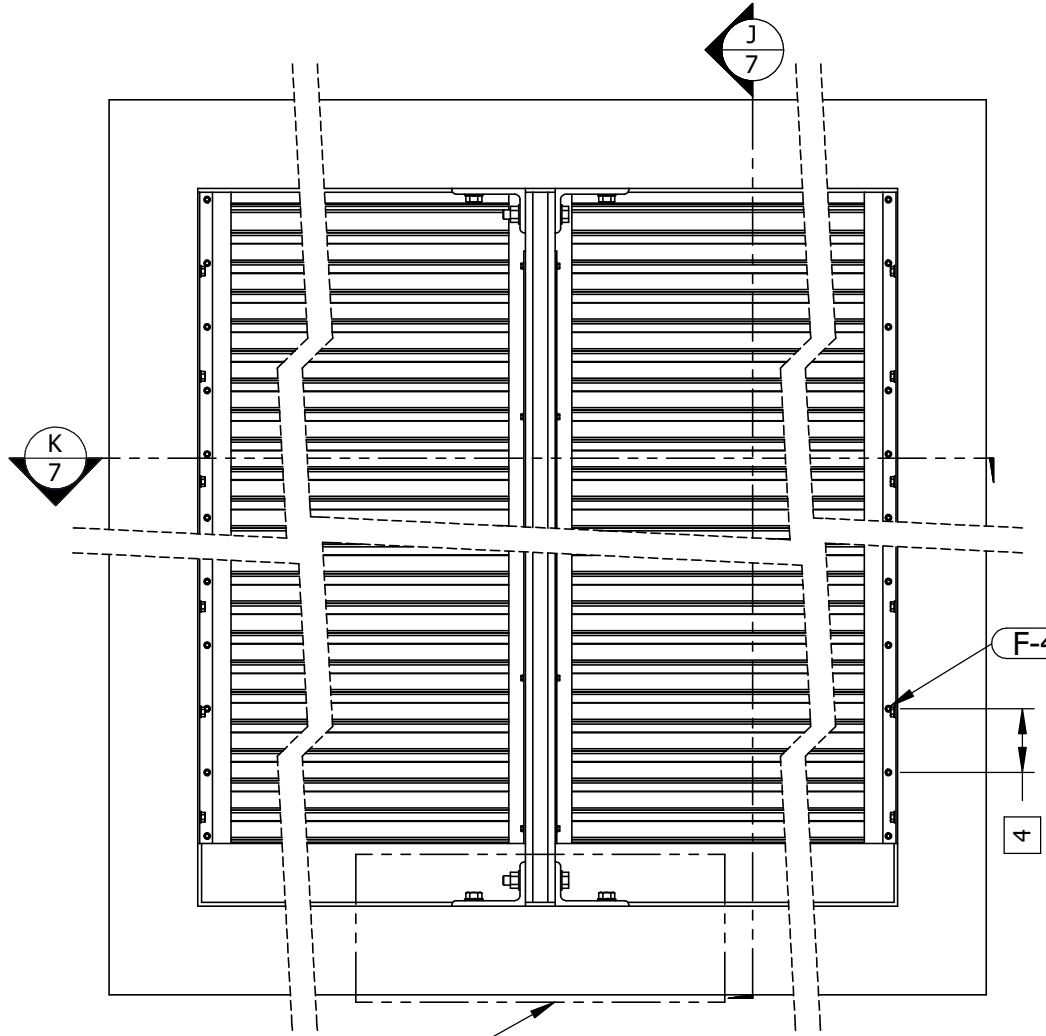
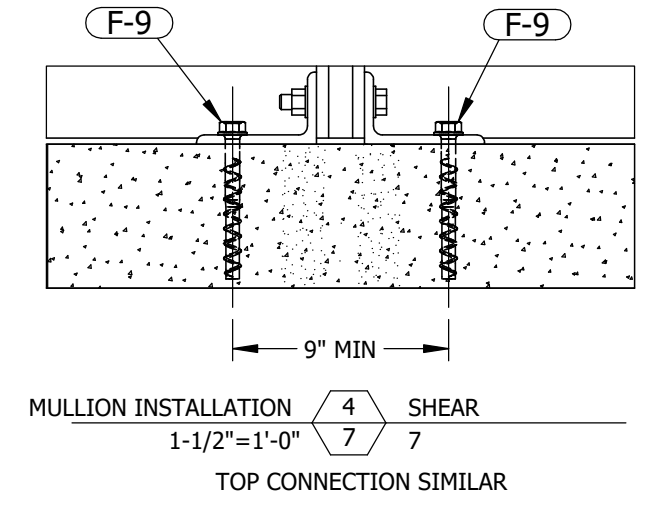
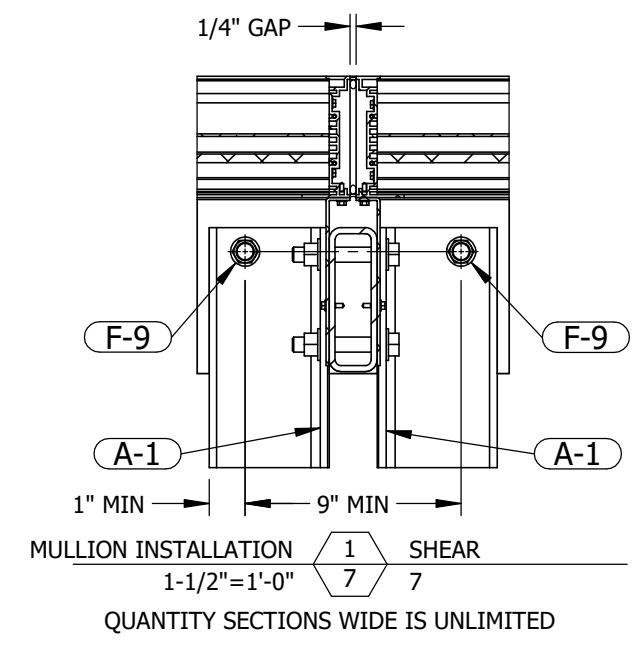
DRAWING DESCR: CONCRETE CONDITION TENSION CONNECTION				
PROJECT: ECD-545-MD				
LOCATION:				
CUSTOMER:				
PROJ. MGR.:		DRAWN BY: JMR		
DATE: 6/28/2022	CHK'D BY: NW	ORDER NUMBER	P.O. NUMBER	DRAWING NUMBER
SHEET: 6 of 19		SCALE: 1"=1'-0"		
ECD-545-MD TDI				

REV.	DESCRIPTION	DATE	DRAWN BY
1	REVISE NOTE 2	12/8/2022	JMR
0	INITIAL RELEASE	6/28/2022	JMR

I:\Engineering Library\ECN-EIN\2022\ECN 22-0068 - Create TDI Versions of MD Documentation - ECD, ECV, EDV-545-MD



CONCRETE CONDITION SHEAR CONNECTION



- NOTES:
- 1 SEE SHEET 6 FOR TENSION CONNECTION DETAILS WHEN CONCRETE CONDITION AT JAMB ≤ 7 1/4" THICK.
 - 2 SEE SHEET 6 FOR TENSION CONNECTION DETAILS WHEN CONCRETE CONDITION AT MULLION ≤ 12 3/8" THICK.
 - 3 SEE TABLE 3 ON SHEET 1 FOR ANCHOR SPACING.
 - 4 SEE TABLE 4 ON SHEET 1 FOR FASTENER SPACING.

P.E. STAMP

STATE OF TEXAS
CHAD C. LORITZ
130200
LICENSED PROFESSIONAL ENGINEER
12/09/2022
Firm #: F-2183

REV.	DESCRIPTION	DATE	DRAWN BY
1	REVISE NOTE 2	12/8/2022	JMR
0	INITIAL RELEASE	6/28/2022	JMR

UNLESS OTHERWISE SPECIFIED DIMENSION ARE IN INCHES.

TOLERANCE UNLESS NOTED:
 X.X ±0.060
 X.XX ±0.030
 X.XXX ±0.010
 ANGLE ±1°
 FRACTION ±1/16

MAX HOLE BREAKOUT:
 15% OF MATERIAL THICKNESS

5101 Blue Mound Road
 Fort Worth, Texas 76106
 Phone: 817-509-2300
 Fax: 817-831-3110

THIRD ANGLE PROJECTION

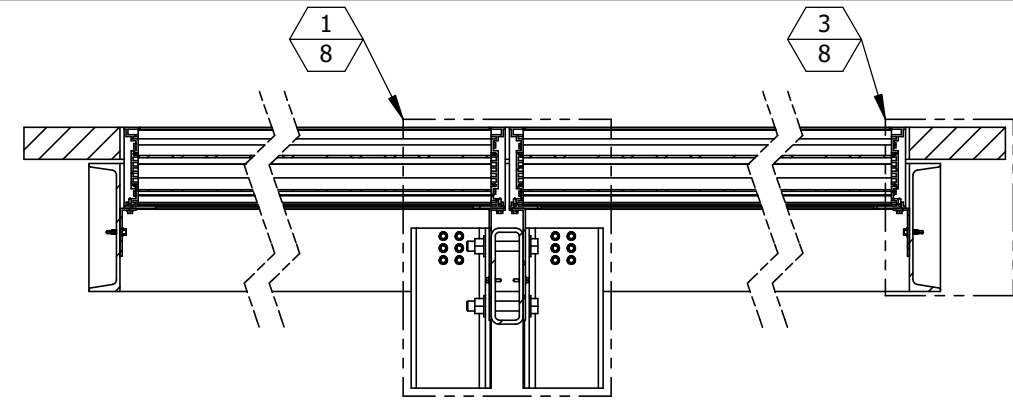
PCI INDUSTRIES DOING BUSINESS AS

POTTORFF

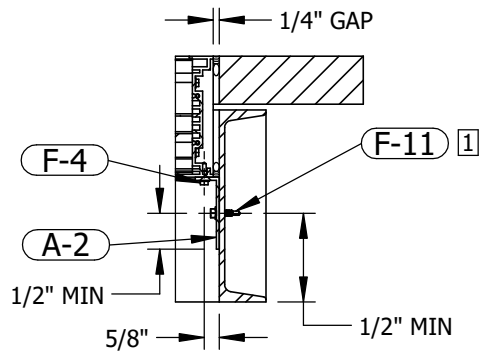
DRAWING DESCR: CONCRETE CONDITION SHEAR CONNECTION				
PROJECT: ECD-545-MD				
LOCATION:				
CUSTOMER:				
PROJ. MGR.:		DRAWN BY: JMR		
DATE: 6/28/2022	CHK'D BY: NW	ORDER NUMBER	P.O. NUMBER	DRAWING NUMBER
SHEET: 7 of 19	SCALE: 1"=1'-0"			ECD-545-MD TDI

I:\Engineering Library\ECN-EIN\2022\ECN 22-0068 - Create TDI Versions of MD Documentation - ECD, ECV, EDV-545-MD

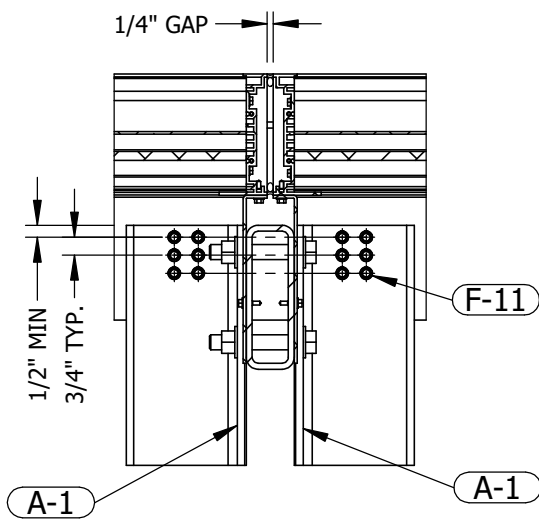
STEEL CONDITION



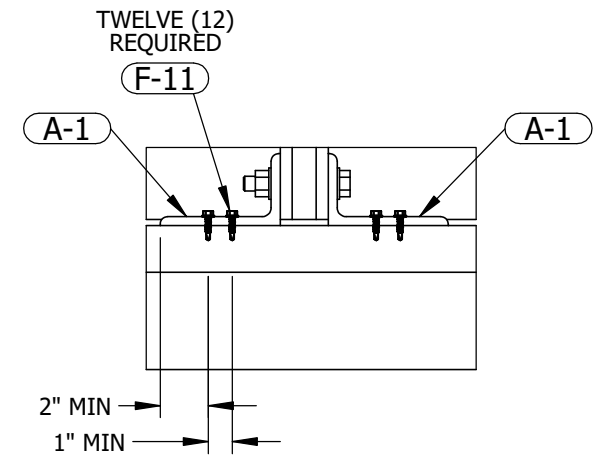
SECTION VIEW **M** 8 STEEL
1-1/2"=1'-0"



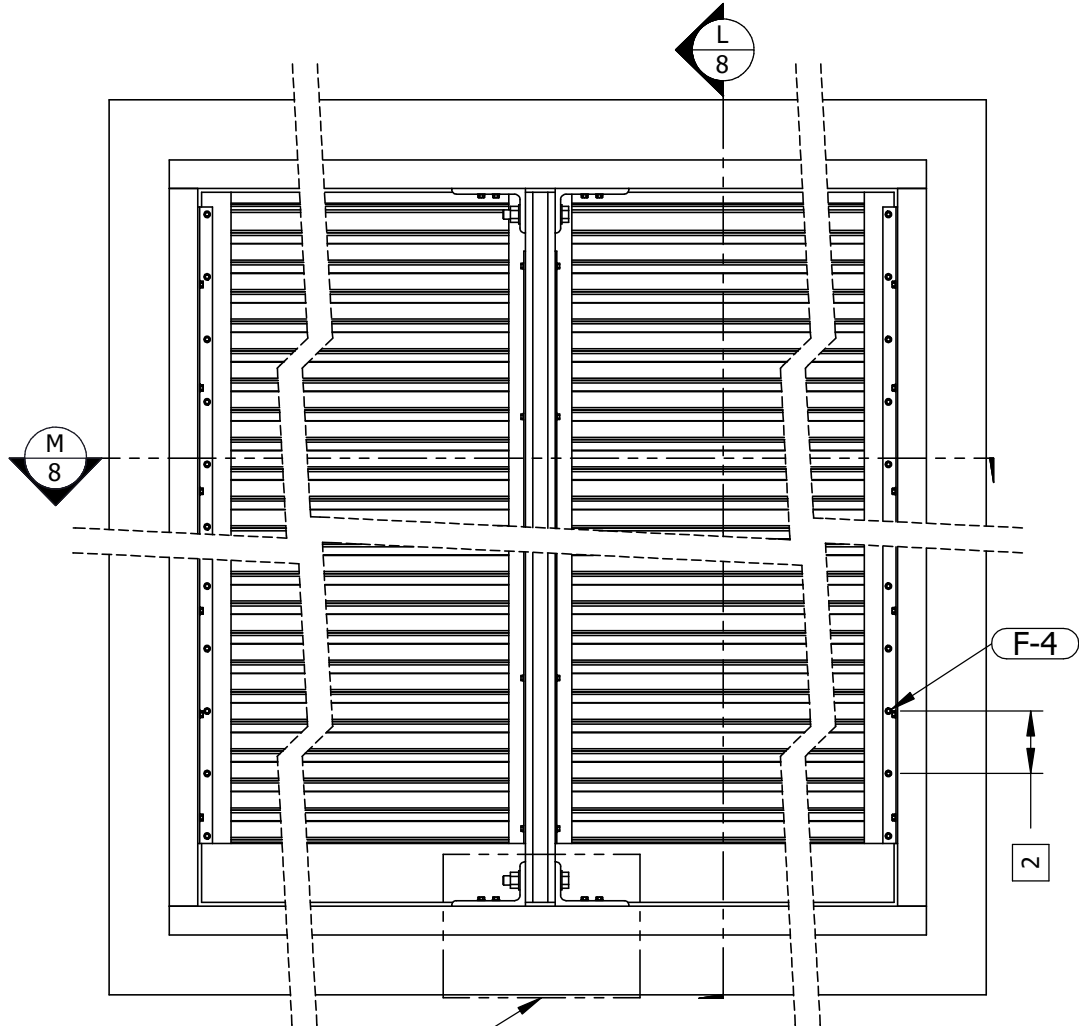
JAMB DETAIL **3** 8 STEEL
1-1/2"=1'-0"
TYPICAL OPP. HAND



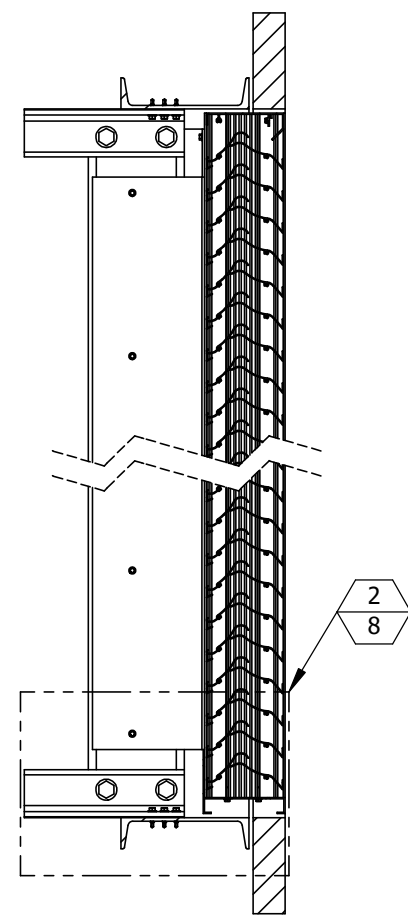
MULLION INSTALLATION **1** 8 STEEL
1-1/2"=1'-0"
QUANTITY SECTIONS WIDE IS UNLIMITED



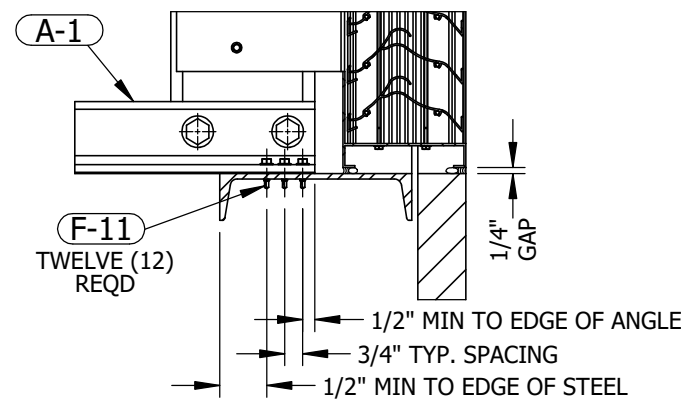
MULLION INSTALLATION **4** 8 STEEL
1-1/2"=1'-0"
TOP CONNECTION SIMILAR



INTERIOR ELEVATION **4** 8 STEEL
1-1/2"=1'-0"
QUANTITY SECTIONS WIDE IS UNLIMITED

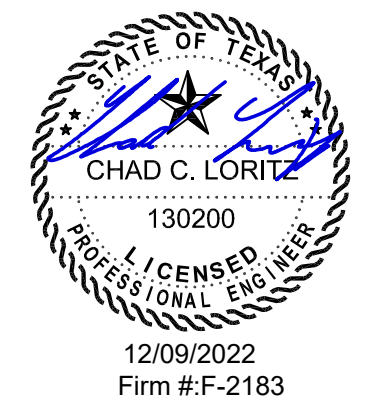


SECTION VIEW **L** 8 STEEL
1-1/2"=1'-0"



BOTTOM DETAIL **2** 8 STEEL
1-1/2"=1'-0"
TOP CONNECTION SIMILAR

P.E. STAMP



- NOTES:
 1 SEE TABLE 3 ON SHEET 1 FOR ANCHOR SPACING.
 2 SEE TABLE 4 ON SHEET 1 FOR FASTENER SPACING.

REV.	DESCRIPTION	DATE	DRAWN BY
1	REVISE NOTE 2	12/8/2022	JMR
0	INITIAL RELEASE	6/28/2022	JMR

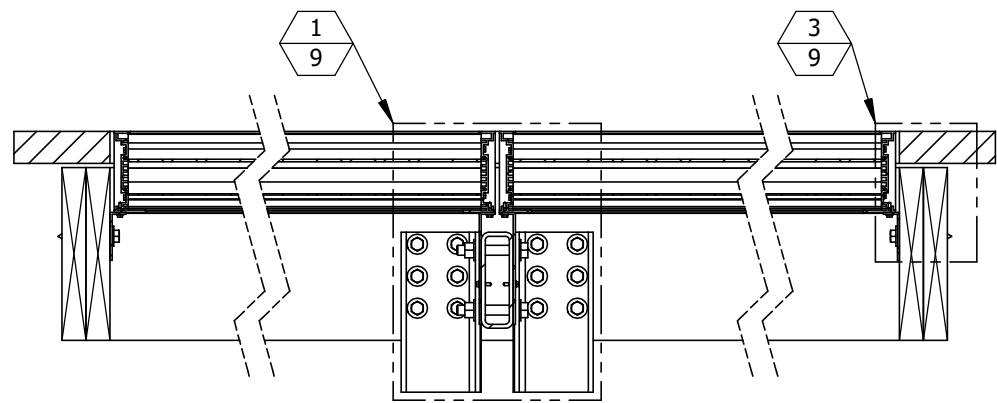
UNLESS OTHERWISE SPECIFIED DIMENSION ARE IN INCHES.
 TOLERANCE UNLESS NOTED:
 X.X ±0.060
 X.XX ±0.030
 X.XXX ±0.010
 ANGLE ±1°
 FRACTION ±1/16
 MAX HOLE BREAKOUT:
 15% OF MATERIAL THICKNESS

5101 Blue Mound Road
 Fort Worth, Texas 76106
 Phone: 817-509-2300
 Fax: 817-831-3110
 THIRD ANGLE PROJECTION

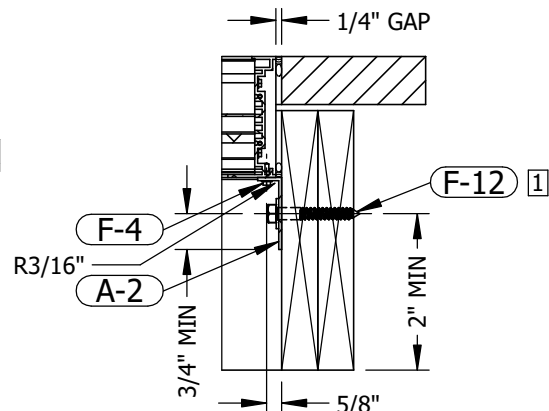


DRAWING DESCR: STEEL CONDITION				
PROJECT: ECD-545-MD				
LOCATION:				
CUSTOMER:				
PROJ. MGR.:		DRAWN BY: JMR		
DATE: 6/28/2022	CHK'D BY: NW	ORDER NUMBER	P.O. NUMBER	DRAWING NUMBER
SHEET: 8 of 19	SCALE: 1"=1'-0"			ECD-545-MD TDI

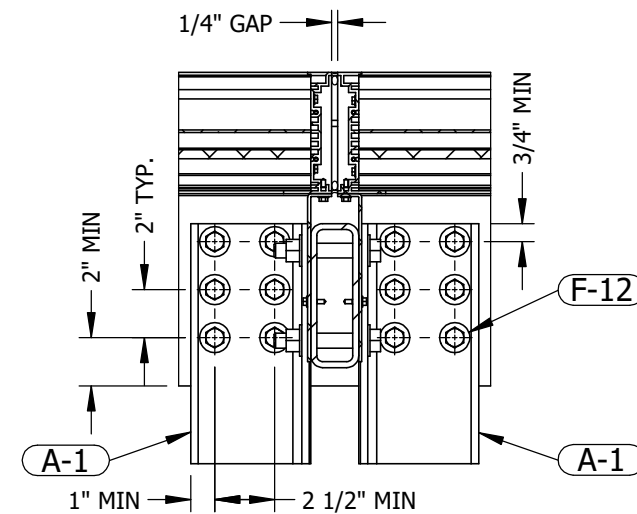
I:\Engineering Library\ECN-EIN\2022\ECN 22-0068 - Create TDI Versions of MD Documentation - ECD, ECV, EDV-545-MD



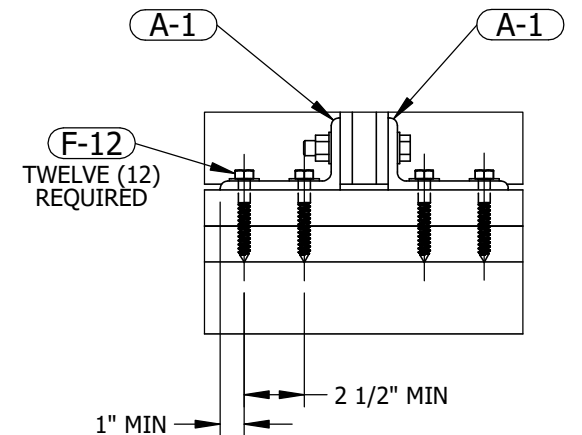
SECTION VIEW P WOOD
1-1/2"=1'-0"



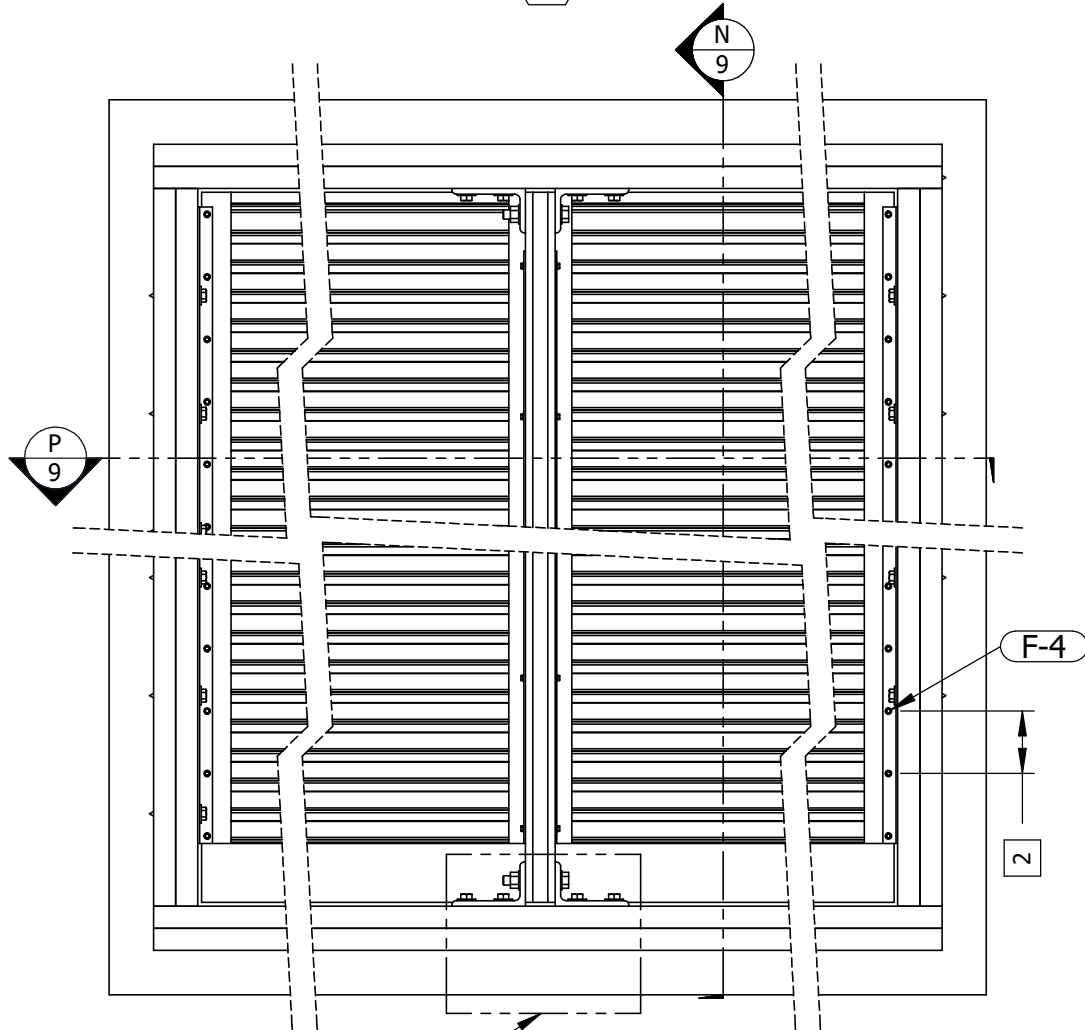
JAMB DETAIL 3 WOOD
1-1/2"=1'-0"
TYPICAL OPP. HAND



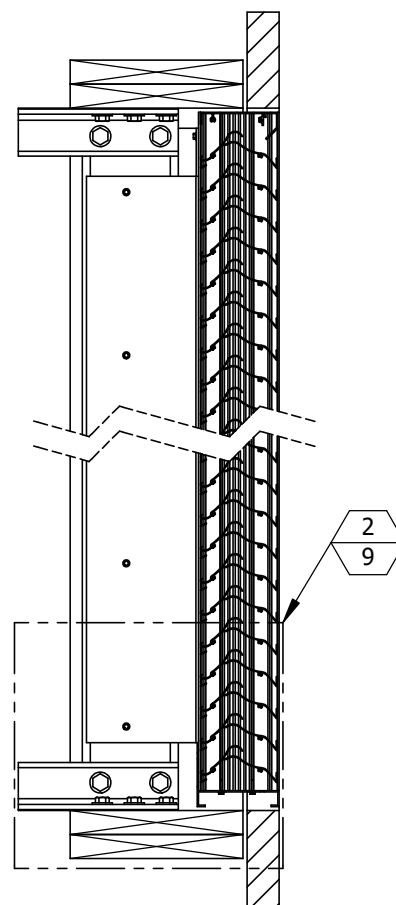
MULLION INSTALLATION 1 WOOD
1-1/2"=1'-0"
QUANTITY SECTIONS WIDE IS UNLIMITED



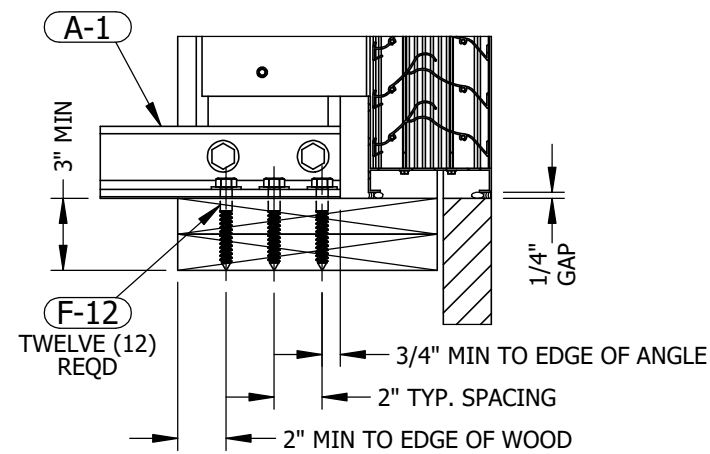
MULLION INSTALLATION 4 WOOD
1-1/2"=1'-0"
TOP CONNECTION SIMILAR



INTERIOR ELEVATION
QUANTITY SECTIONS WIDE IS UNLIMITED



SECTION VIEW N WOOD
1-1/2"=1'-0"



BOTTOM DETAIL 2 WOOD
1-1/2"=1'-0"
TOP CONNECTION SIMILAR

- NOTES:
 1 SEE TABLE 3 ON SHEET 1 FOR ANCHOR SPACING.
 2 SEE TABLE 4 ON SHEET 1 FOR FASTENER SPACING.

WOOD CONDITION

P.E. STAMP

STATE OF TEXAS
 CHAD C. LORITZ
 130200
 LICENSED PROFESSIONAL ENGINEER
 12/09/2022
 Firm #: F-2183

REV.	DESCRIPTION	DATE	DRAWN BY
1	REVISE NOTE 2	12/8/2022	JMR
0	INITIAL RELEASE	6/28/2022	JMR

UNLESS OTHERWISE SPECIFIED DIMENSION ARE IN INCHES.
 TOLERANCE UNLESS NOTED:
 X.X ±0.060
 X.XX ±0.030
 X.XXX ±0.010
 ANGLE ±1°
 FRACTION ±1/16
 MAX HOLE BREAKOUT:
 15% OF MATERIAL THICKNESS

5101 Blue Mound Road
 Fort Worth, Texas 76106
 Phone: 817-509-2300
 Fax: 817-831-3110

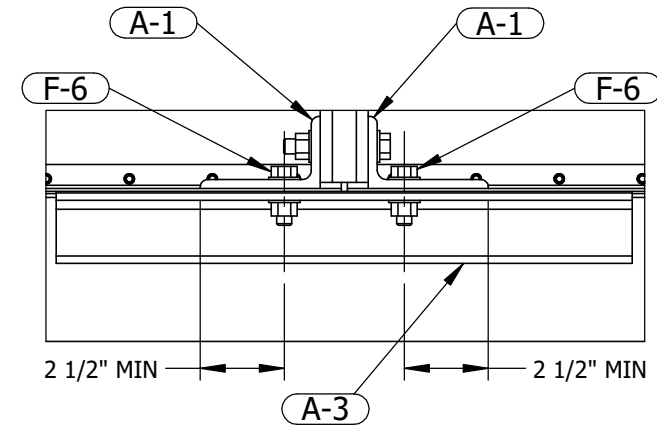
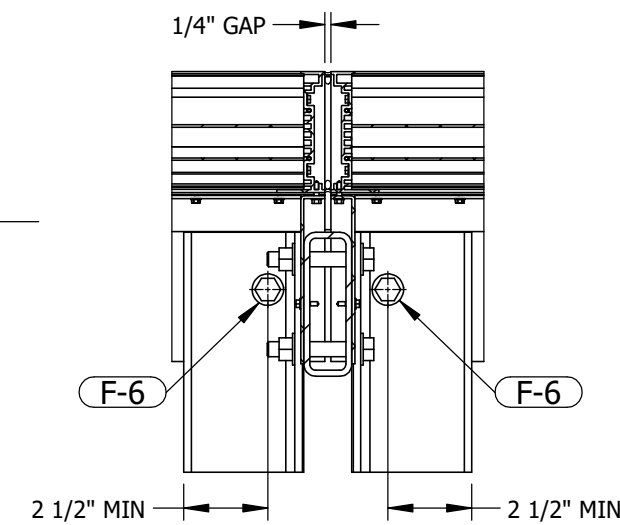
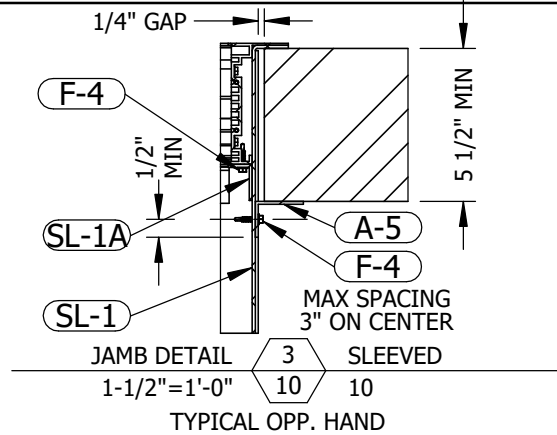
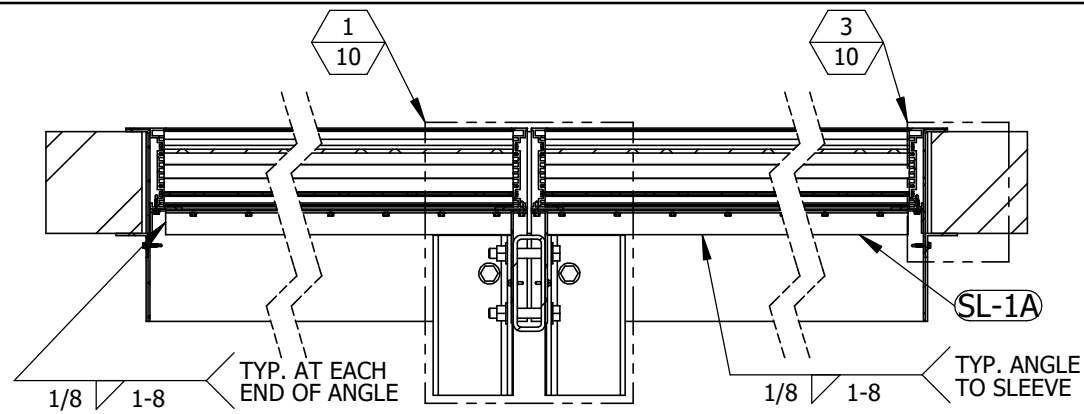
THIRD ANGLE PROJECTION

PCI INDUSTRIES DOING BUSINESS AS

POTTORFF

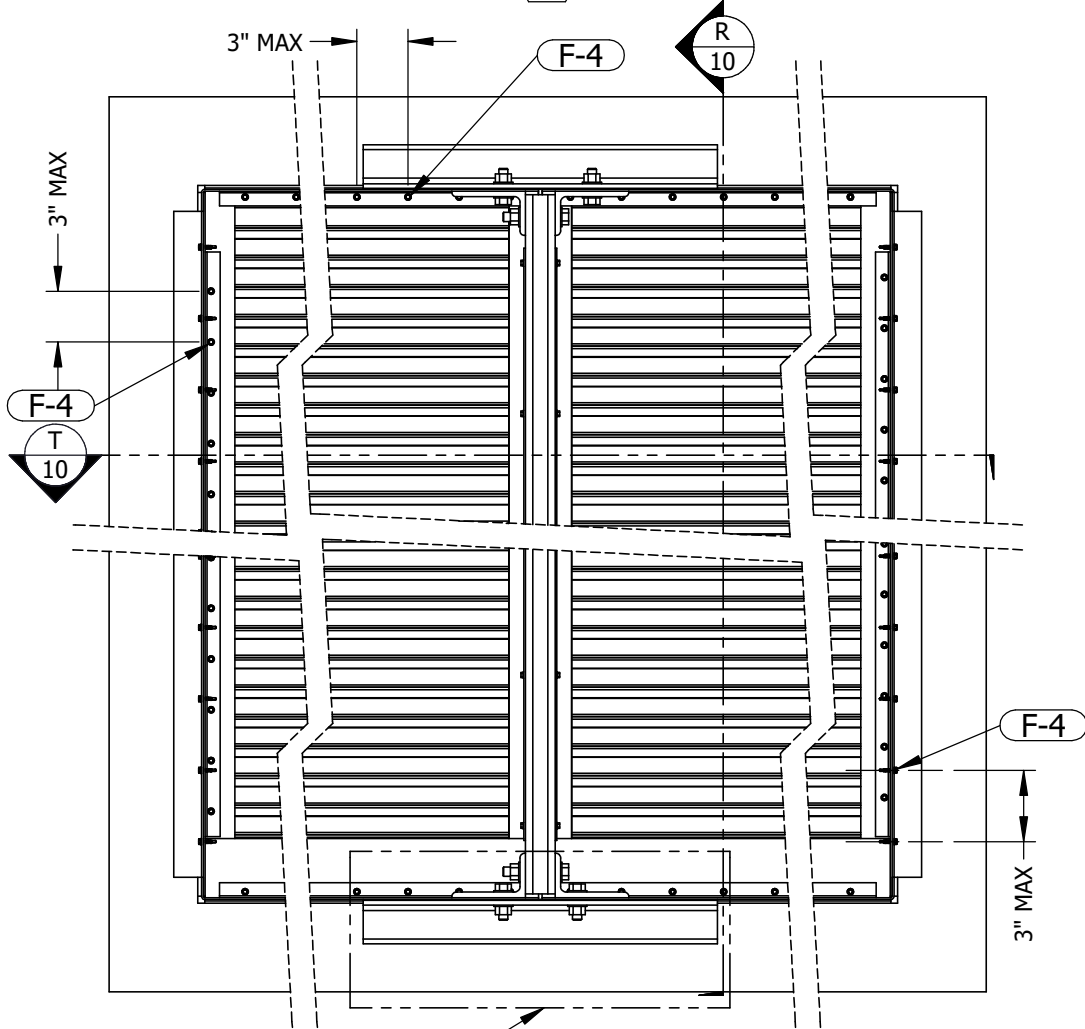
DRAWING DESCR: WOOD CONDITION				
PROJECT: ECD-545-MD				
LOCATION:				
CUSTOMER:				
PROJ. MGR.:		DRAWN BY: JMR		
DATE: 6/28/2022	CHK'D BY: NW	ORDER NUMBER	P.O. NUMBER	DRAWING NUMBER
SHEET: 9 of 19	SCALE: 1"=1'-0"			ECD-545-MD TDI

I:\Engineering Library\ECN-EIN\2022\ECN 22-0068 - Create TDI Versions of MD Documentation - ECD, ECV, EDV-545-MD

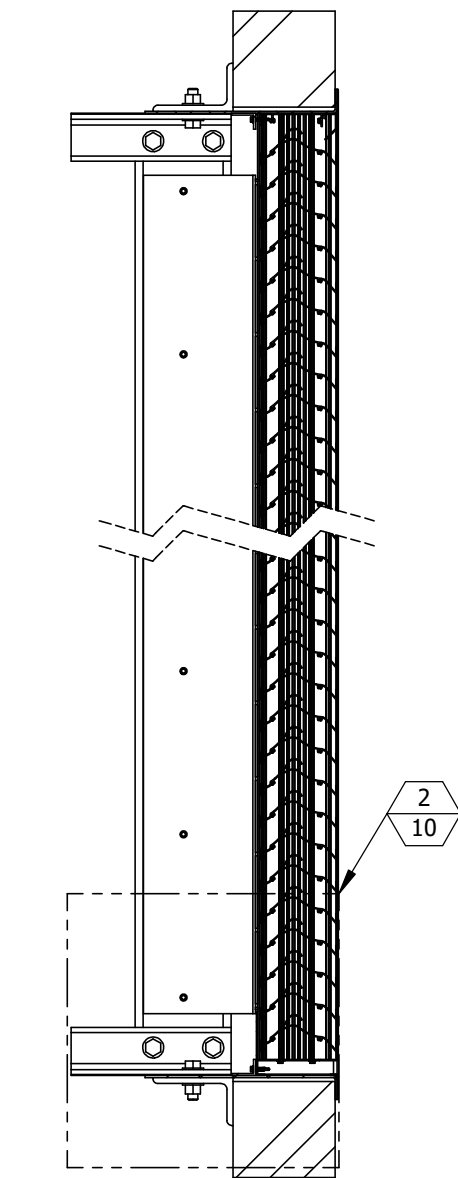


SLEEVED

SECTION VIEW **T** SLEEVED
1"=1'-0" **10** 10



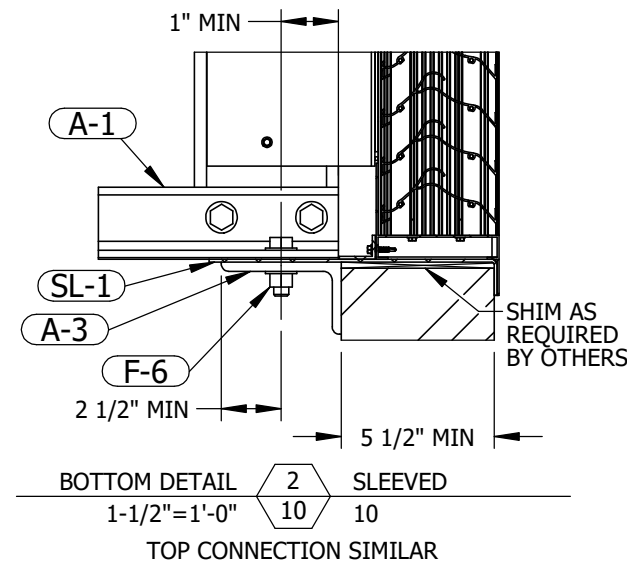
INTERIOR ELEVATION
QUANTITY SECTIONS WIDE IS UNLIMITED



SECTION VIEW **R** SLEEVED
1"=1'-0" **10** 10

MULLION INSTALLATION **1** SLEEVED
1-1/2"=1'-0" **10** 10
QUANTITY SECTIONS WIDE IS UNLIMITED

MULLION INSTALLATION **4** SLEEVED
1-1/2"=1'-0" **10** 10
TOP CONNECTION SIMILAR



BOTTOM DETAIL **2** SLEEVED
1-1/2"=1'-0" **10** 10
TOP CONNECTION SIMILAR

P.E. STAMP



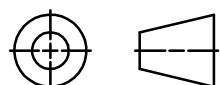
UNLESS OTHERWISE SPECIFIED
DIMENSION ARE IN INCHES.

TOLERANCE UNLESS NOTED:
X.X ±0.060
X.XX ±0.030
X.XXX ±0.010
ANGLE ±1°
FRACTION ±1/16

MAX HOLE BREAKOUT:
15% OF MATERIAL THICKNESS

5101 Blue Mound Road
Fort Worth, Texas 76106
Phone: 817-509-2300
Fax: 817-831-3110

THIRD ANGLE PROJECTION



PCI INDUSTRIES DOING BUSINESS AS

POTTORFF

DRAWING DESCR: SLEEVED

PROJECT: ECD-545-MD

LOCATION:

CUSTOMER:

PROJ. MGR.:

DRAWN BY: JMR

DATE: 6/28/2022

CHK'D BY: NW

ORDER NUMBER

P.O. NUMBER

DRAWING NUMBER

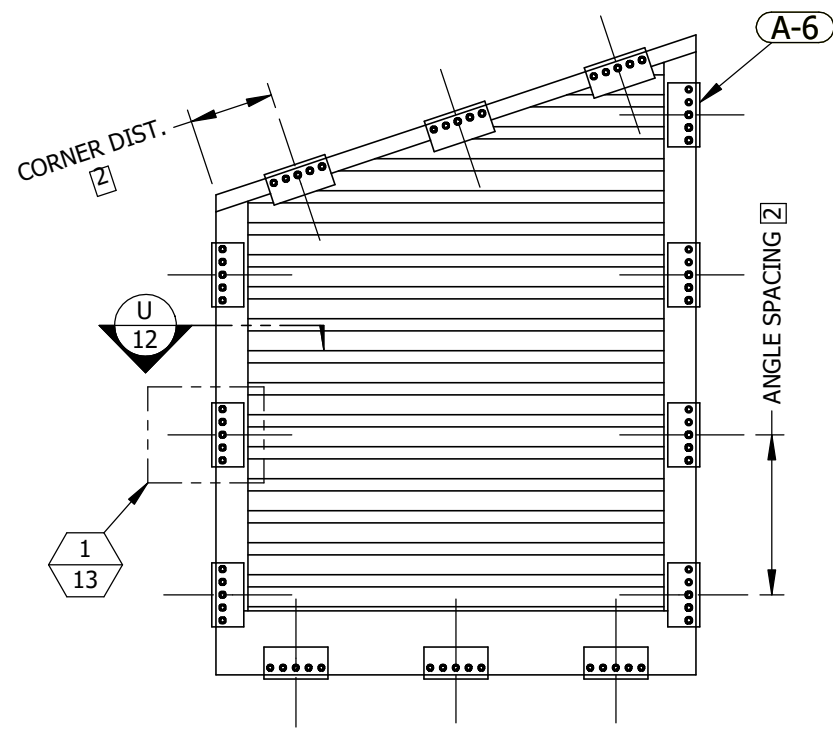
SHEET: 10 of 19

SCALE: 1"=1'-0"

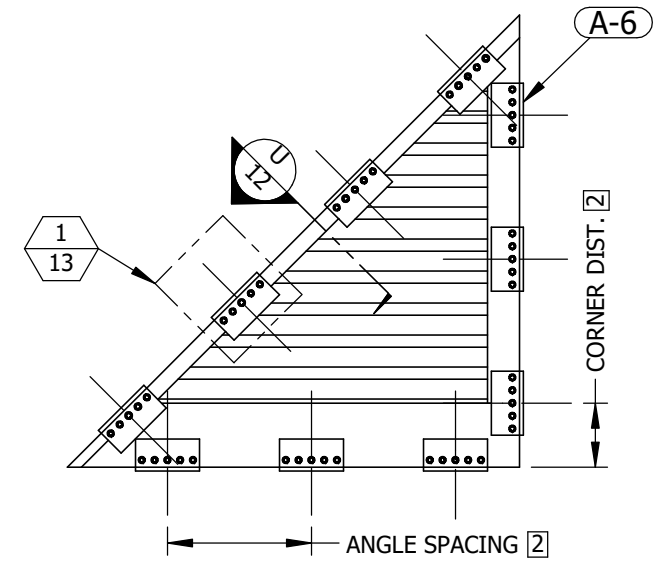
ECD-545-MD TDI

REV.	DESCRIPTION	DATE	DRAWN BY
1	REVISE NOTE 2	12/8/2022	JMR
0	INITIAL RELEASE	6/28/2022	JMR

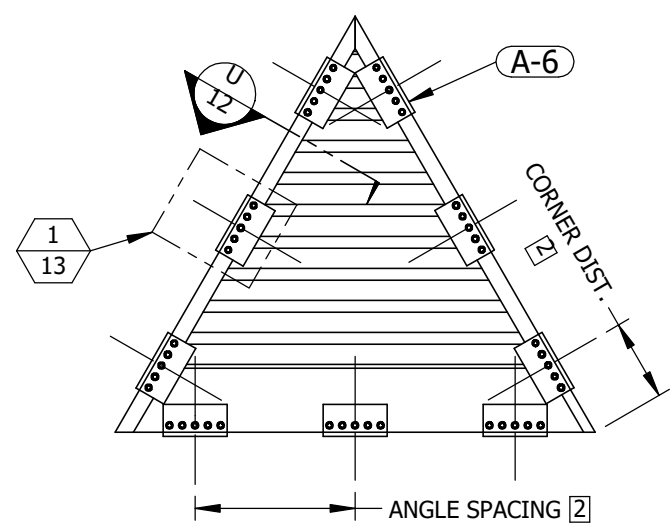
SPECIAL SHAPES INSTALLATION



TRAPEZOID 1 REAR/INTERIOR VIEW
1"=1'-0" 11 11

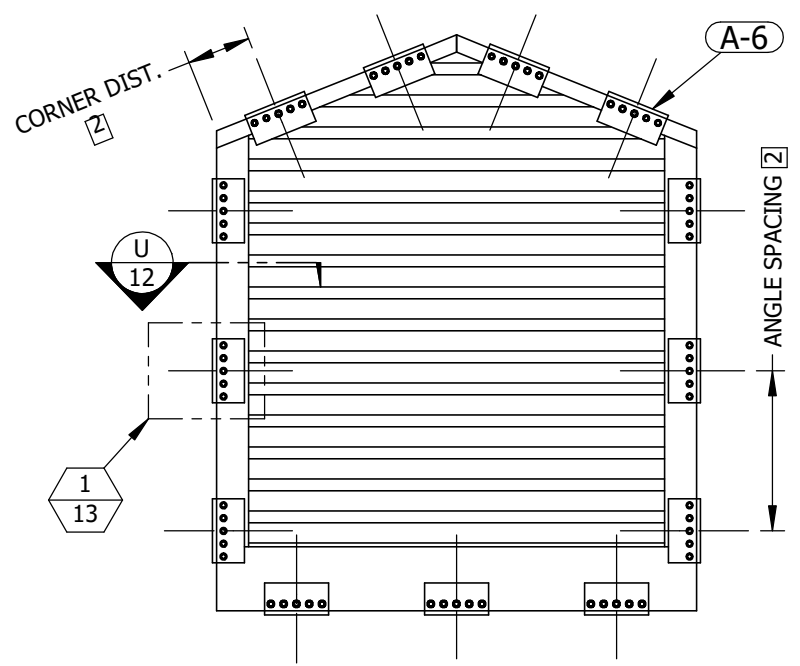


RIGHT TRIANGLE 2 REAR/INTERIOR VIEW
1"=1'-0" 11 11

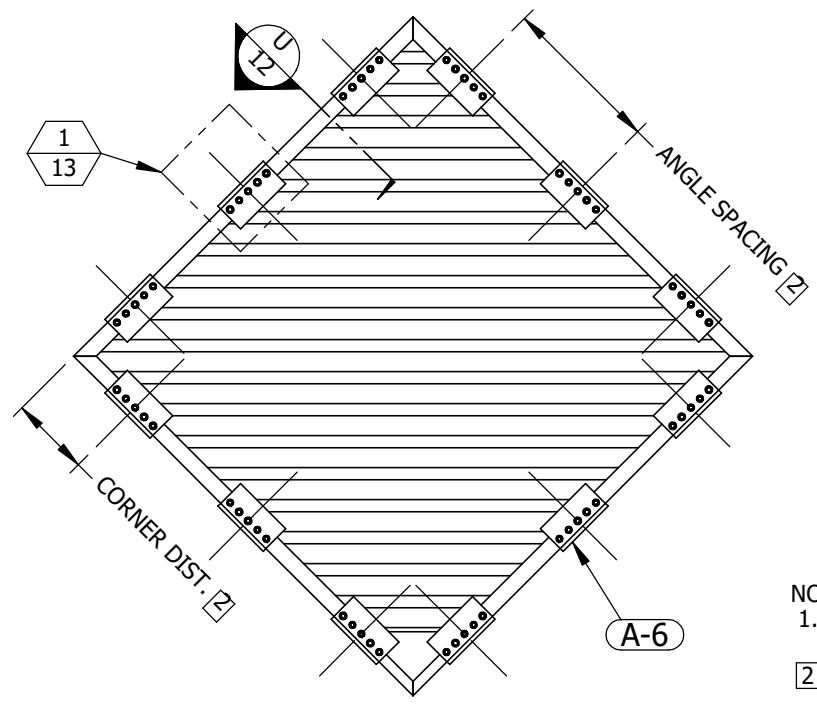


ISOSCELES TRIANGLE 3 REAR/INTERIOR VIEW
1"=1'-0" 11 11

TABLE 5 SHAPE CLIP ANGLE DIMENSIONS		
SUBSTRATE	ANGLE SPACING	CORNER DISTANCE
CONCRETE	8"	4"
GROUT-FILLED CMU	5 1/2"	2 3/4"
STEEL	10"	5"
WOOD	10"	5"



DOUBLE SLOPE TOP 4 REAR/INTERIOR VIEW
1"=1'-0" 11 11



DIAMOND 5 REAR/INTERIOR VIEW
1"=1'-0" 11 11

- NOTES:
1. SHAPED LOUVER WIDTH AND HEIGHT WILL NOT EXCEED 60" X 144".
 2. ALLOWABLE CLIP ANGLE SPACING AND CORNER DISTANCE VARY BY SUBSTRATE. SEE TABLE 5 FOR ALLOWABLE SPACING AND CORNER DISTANCE DIMENSIONS FOR EACH SUBSTRATE TYPE.
 3. CLIP ANGLES TO BE INSTALLED AROUND ENTIRE PERIMETER OF OPENING.

P.E. STAMP



I:\Engineering Library\ECN-EIN\2022\ECN 22-0068 - Create TDI Versions of MD Documentation - ECD_ECV_EDV-545-MD\

REV.	DESCRIPTION	DATE	DRAWN BY
1	REVISE NOTE 2	12/8/2022	JMR
0	INITIAL RELEASE	6/28/2022	JMR

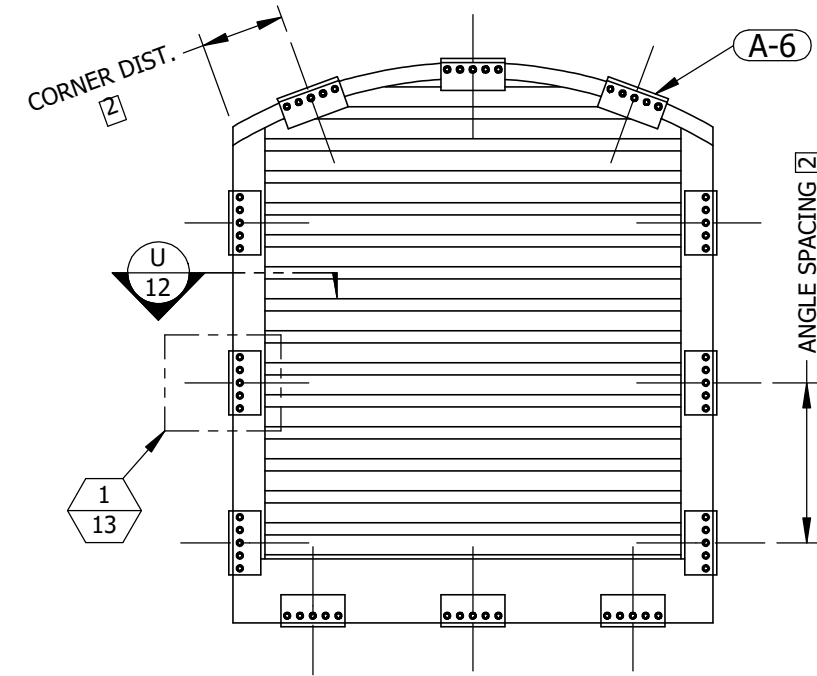
UNLESS OTHERWISE SPECIFIED DIMENSION ARE IN INCHES.
TOLERANCE UNLESS NOTED:
X.X ±0.060
X.XX ±0.030
X.XXX ±0.010
ANGLE ±1°
FRACTION ±1/16
MAX HOLE BREAKOUT:
15% OF MATERIAL THICKNESS

5101 Blue Mound Road
Fort Worth, Texas 76106
Phone: 817-509-2300
Fax: 817-831-3110
THIRD ANGLE PROJECTION

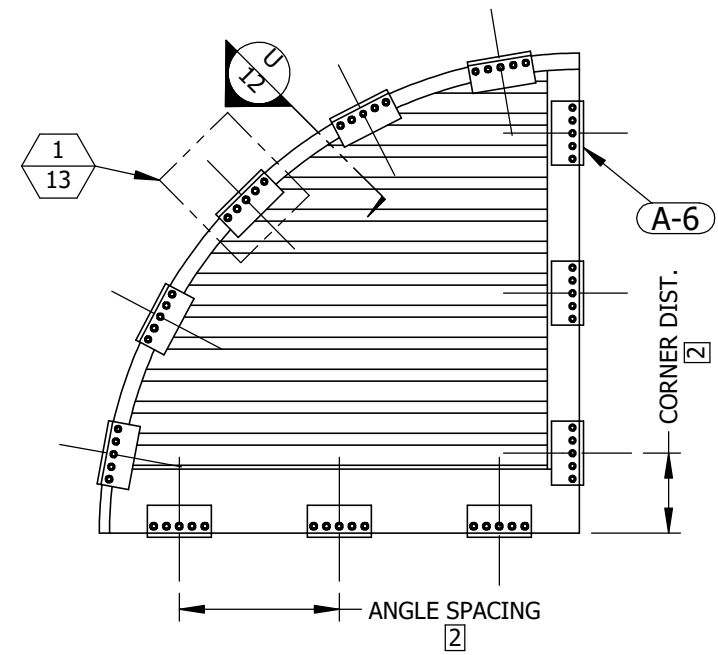
PCI INDUSTRIES DOING BUSINESS AS
POTTORFF

DRAWING DESCR: SPECIAL SHAPES INSTALLATION				
PROJECT: ECD-545-MD				
LOCATION:				
CUSTOMER:				
PROJ. MGR.:		DRAWN BY: JMR		
DATE: 6/28/2022	CHK'D BY: NW	ORDER NUMBER	P.O. NUMBER	DRAWING NUMBER
SHEET: 11 of 19	SCALE: 1-1/2"=1'-0"	ECD-545-MD TDI		

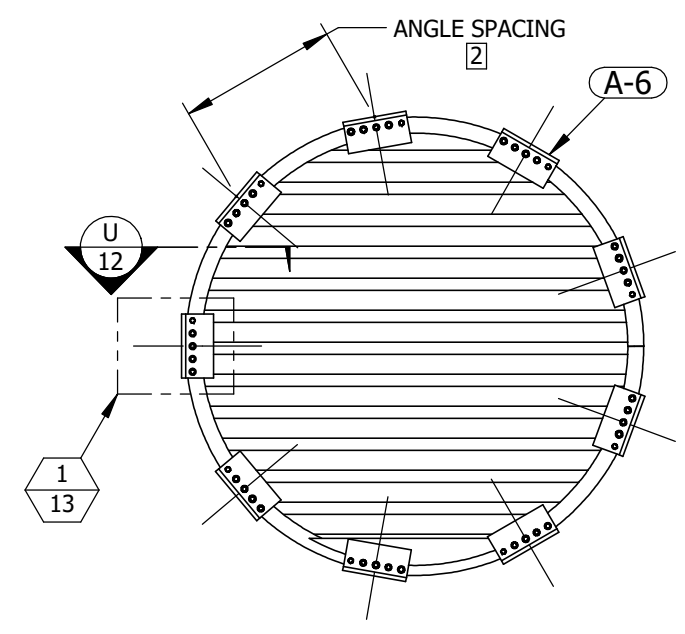
SPECIAL SHAPES INSTALLATION



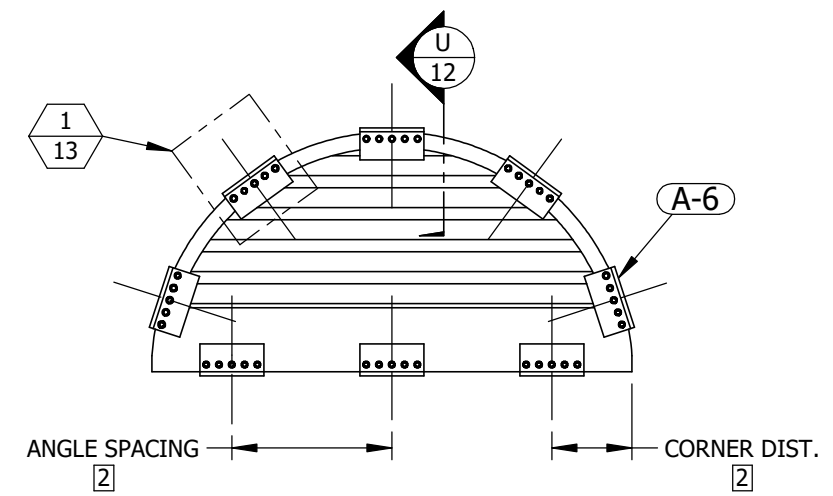
RADIUS TOP 1 REAR/INTERIOR VIEW
1"=1'-0" 12 12



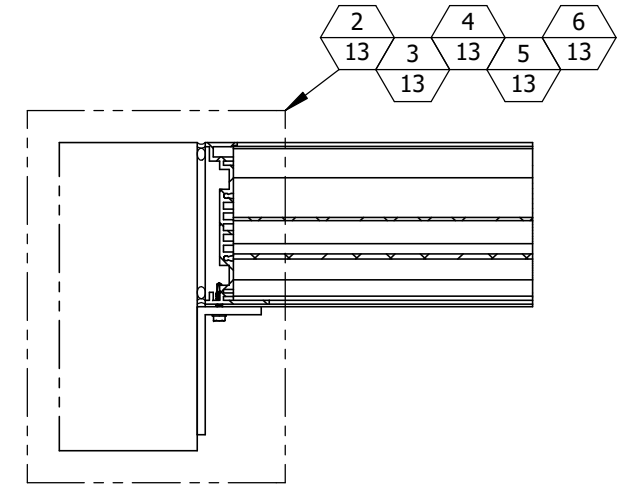
QUARTER ROUND 2 REAR/INTERIOR VIEW
1"=1'-0" 12 12



ROUND 3 REAR/INTERIOR VIEW
1"=1'-0" 12 12



HALF ROUND 4 REAR/INTERIOR VIEW
1"=1'-0" 12 12



SHAPE CLIP ANGLE U SECTION VIEW
2"=1'-0" 12 11, 12

- NOTES:
1. SHAPED LOUVER WIDTH AND HEIGHT WILL NOT EXCEED 60" X 144".
 2. ALLOWABLE CLIP ANGLE SPACING AND CORNER DISTANCE VARY BY SUBSTRATE. SEE TABLE 5, SHEET 11 FOR ALLOWABLE SPACING AND CORNER DISTANCE DIMENSIONS FOR EACH SUBSTRATE TYPE.
 3. CLIP ANGLES TO BE INSTALLED AROUND ENTIRE PERIMETER OF OPENING.

P.E. STAMP



I:\Engineering Library\ECN-EIN\2022\ECN 22-0068 - Create TDI Versions of MD Documentation - ECD_ECV_EDV-545-MD\

REV.	DESCRIPTION	DATE	DRAWN BY
1	REVISE NOTE 2	12/8/2022	JMR
0	INITIAL RELEASE	6/28/2022	JMR

UNLESS OTHERWISE SPECIFIED DIMENSION ARE IN INCHES.

TOLERANCE UNLESS NOTED:

X.X ±0.060
 X.XX ±0.030
 X.XXX ±0.010
 ANGLE ±1°
 FRACTION ±1/16

MAX HOLE BREAKOUT:
 15% OF MATERIAL THICKNESS

5101 Blue Mound Road
 Fort Worth, Texas 76106
 Phone: 817-509-2300
 Fax: 817-831-3110

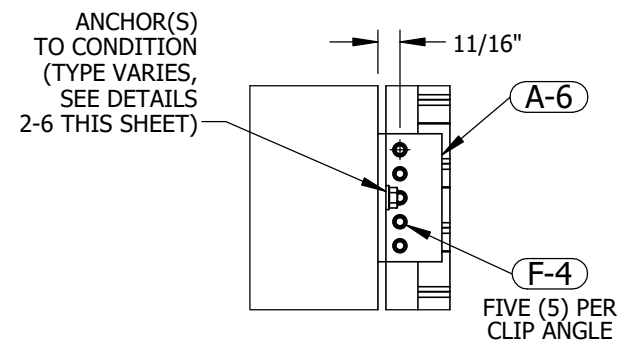
THIRD ANGLE PROJECTION

PCI INDUSTRIES DOING BUSINESS AS

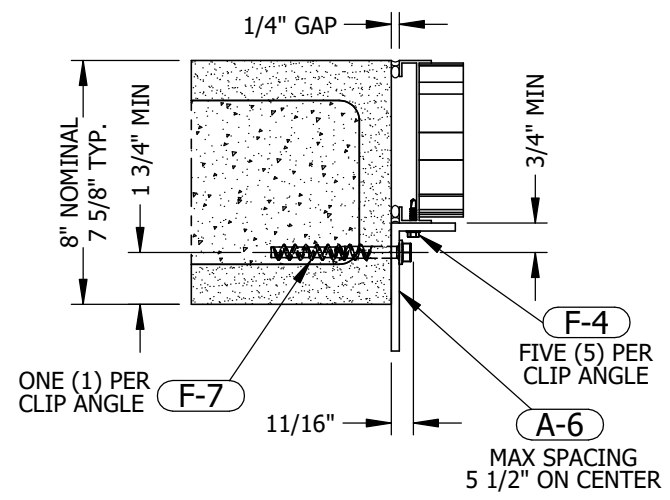
POTTORFF

DRAWING DESCR: SPECIAL SHAPES INSTALLATION				
PROJECT: ECD-545-MD				
LOCATION:				
CUSTOMER:				
PROJ. MGR.:		DRAWN BY: JMR		
DATE: 6/28/2022	CHK'D BY: NW	ORDER NUMBER	P.O. NUMBER	DRAWING NUMBER
SHEET: 12 of 19	SCALE: 1-1/2"=1'-0"			ECD-545-MD TDI

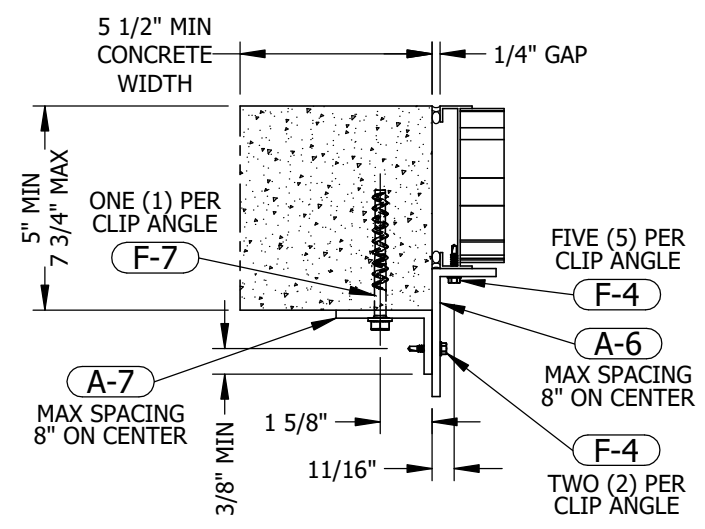
SPECIAL SHAPES INSTALLATION



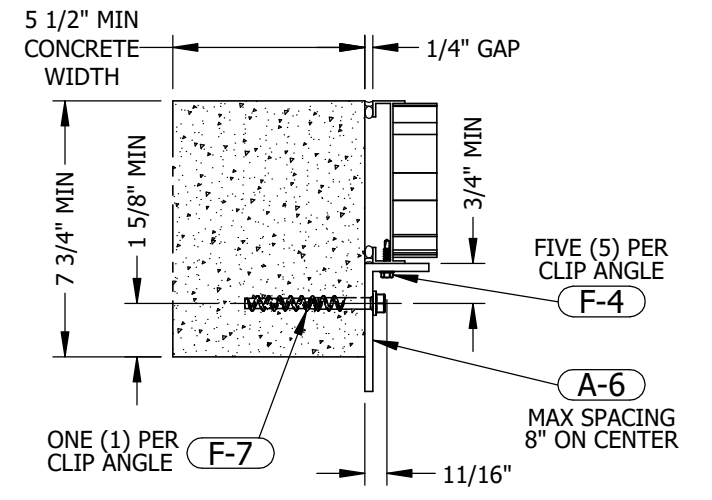
SHAPE CLIP ANGLE 1 REAR/INTERIOR DETAIL
2"=1'-0" 13 11, 12



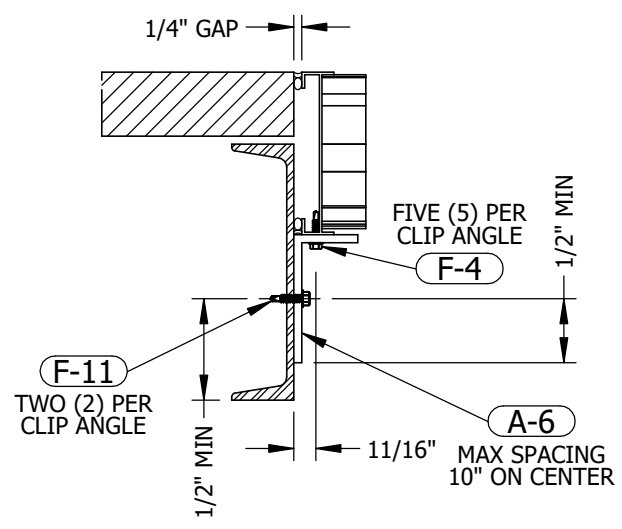
SHAPE CLIP ANGLE 2 GROUT-FILLED CMU
2"=1'-0" 13 12



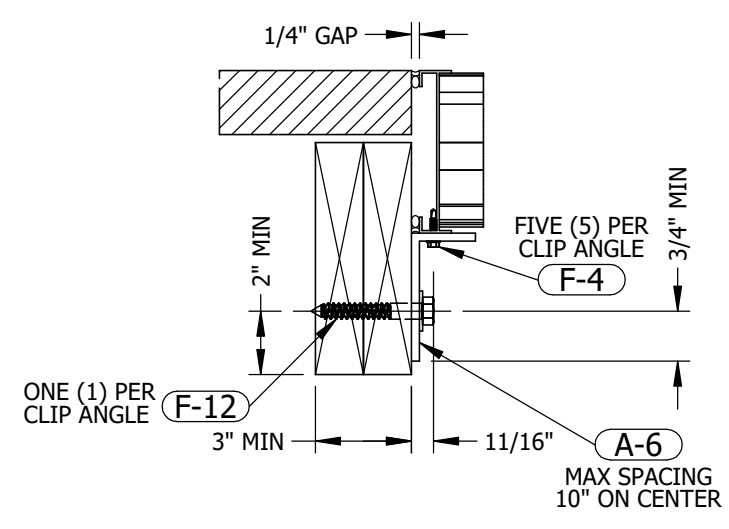
SHAPE CLIP ANGLE 3 CONCRETE ≤ 7 3/4" THICK
2"=1'-0" 13 12



SHAPE CLIP ANGLE 4 CONCRETE ≥ 7 3/4" THICK
2"=1'-0" 13 12



SHAPE CLIP ANGLE 5 STEEL
2"=1'-0" 13 12



SHAPE CLIP ANGLE 6 WOOD
2"=1'-0" 13 12

P.E. STAMP



I:\Engineering Library\ECN-EIN\2022\ECN 22-0068 - Create TDI Versions of MD Documentation - ECD_ECV_EDV-545-MD

REV.	DESCRIPTION	DATE	DRAWN BY
1	REVISE NOTE 2	12/8/2022	JMR
0	INITIAL RELEASE	6/28/2022	JMR

UNLESS OTHERWISE SPECIFIED DIMENSION ARE IN INCHES.

TOLERANCE UNLESS NOTED:
 X.X ±0.060
 X.XX ±0.030
 X.XXX ±0.010
 ANGLE ±1°
 FRACTION ±1/16

MAX HOLE BREAKOUT:
 15% OF MATERIAL THICKNESS

5101 Blue Mound Road
 Fort Worth, Texas 76106
 Phone: 817-509-2300
 Fax: 817-831-3110

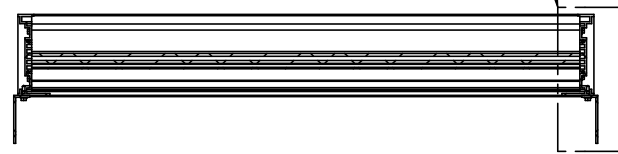
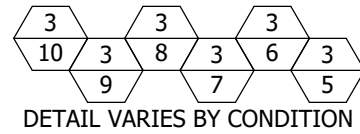
THIRD ANGLE PROJECTION

PCI INDUSTRIES DOING BUSINESS AS

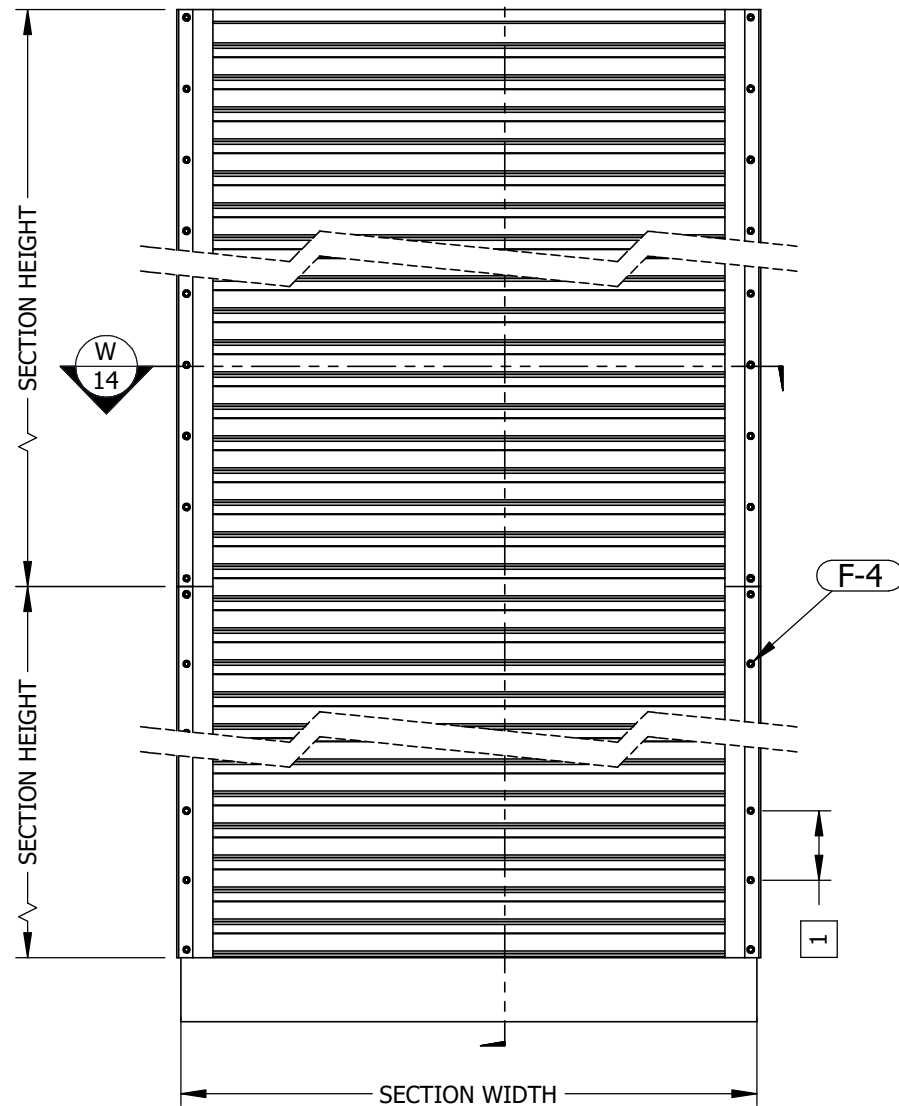
POTTORFF

DRAWING DESCR: SPECIAL SHAPES INSTALLATION				
PROJECT: ECD-545-MD				
LOCATION:				
CUSTOMER:				
PROJ. MGR.:		DRAWN BY: JMR		
DATE: 6/28/2022	CHK'D BY: NW	ORDER NUMBER	P.O. NUMBER	DRAWING NUMBER
SHEET: 13 of 19	SCALE: 1-1/2"=1'-0"			ECD-545-MD TDI

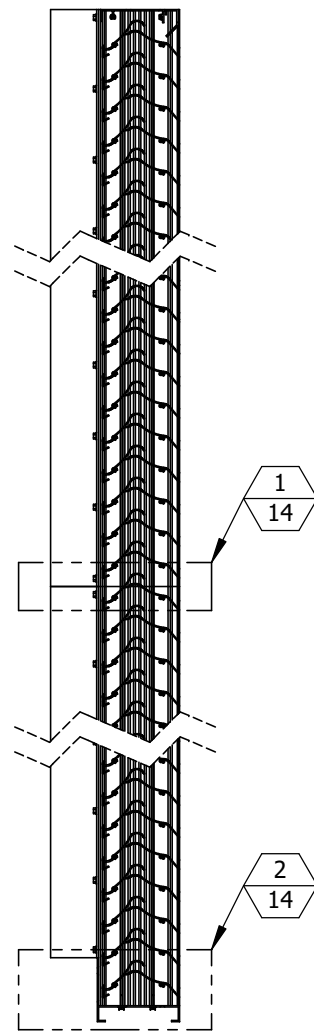
MULTI-SECTION HIGH



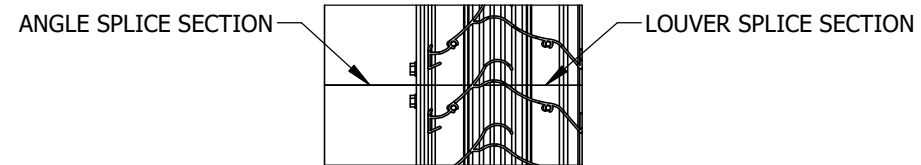
SECTION VIEW $\frac{W}{14}$ MULTI-SECTION HIGH
1"=1'-0" 14



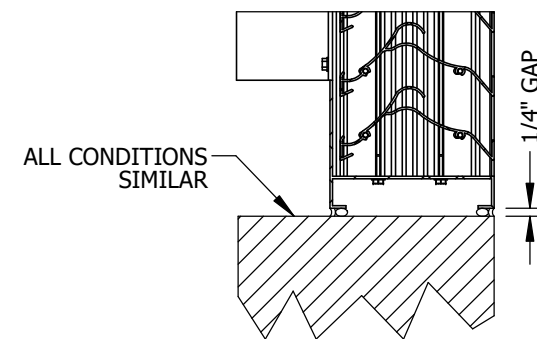
SECTION WIDTH
INTERIOR ELEVATION
QUANTITY SECTIONS HIGH IS UNLIMITED



SECTION VIEW $\frac{V}{14}$ MULTI-SECTION HIGH
1"=1'-0" 14



SPLICE SECTION $\frac{1}{14}$ MULTI-SECTION HIGH
2"=1'-0" 14

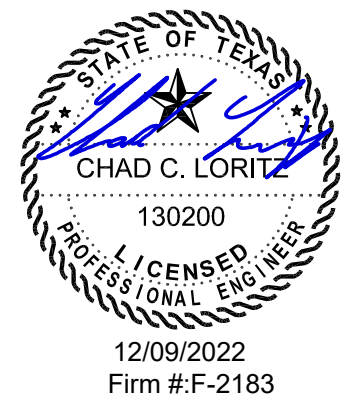


BOTTOM DETAIL $\frac{2}{14}$ MULTI-SECTION HIGH
2"=1'-0" 14

TOP CONNECTION SIMILAR

NOTES:
1 SEE TABLE 4 ON SHEET 1 FOR FASTENER SPACING.

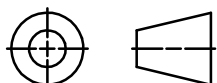
P.E. STAMP



UNLESS OTHERWISE SPECIFIED
DIMENSION ARE IN INCHES.
TOLERANCE UNLESS NOTED:
X.X ±0.060
X.XX ±0.030
X.XXX ±0.010
ANGLE ±1°
FRACTION ±1/16
MAX HOLE BREAKOUT:
15% OF MATERIAL THICKNESS

5101 Blue Mound Road
Fort Worth, Texas 76106
Phone: 817-509-2300
Fax: 817-831-3110

THIRD ANGLE PROJECTION



PCI INDUSTRIES DOING BUSINESS AS

POTTORFF

DRAWING DESCR: MULTI-SECTION HIGH

PROJECT: ECD-545-MD

LOCATION:

CUSTOMER:

PROJ. MGR.:

DRAWN BY: JMR

DATE: 6/28/2022

CHK'D BY: NW

ORDER NUMBER

P.O. NUMBER

DRAWING NUMBER

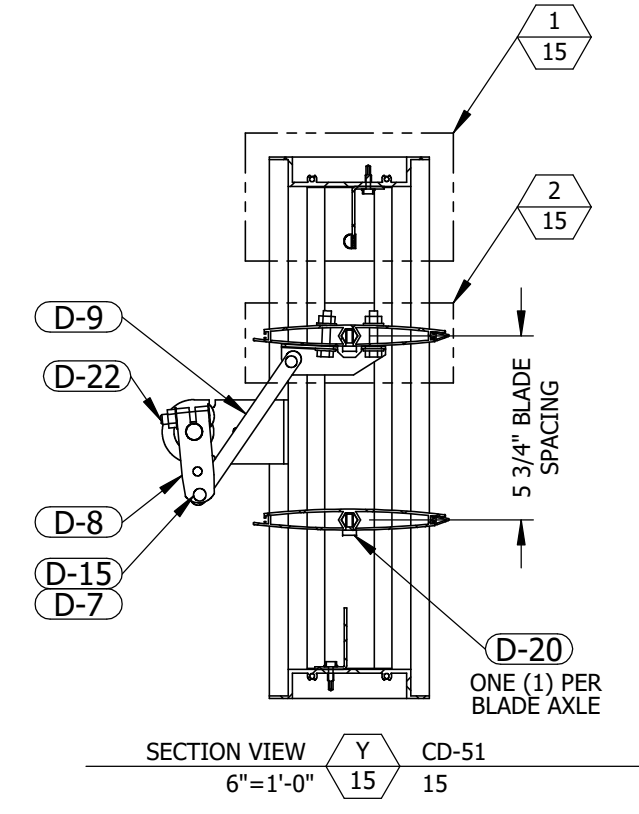
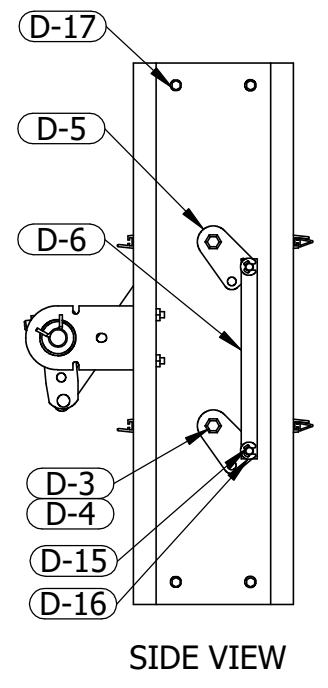
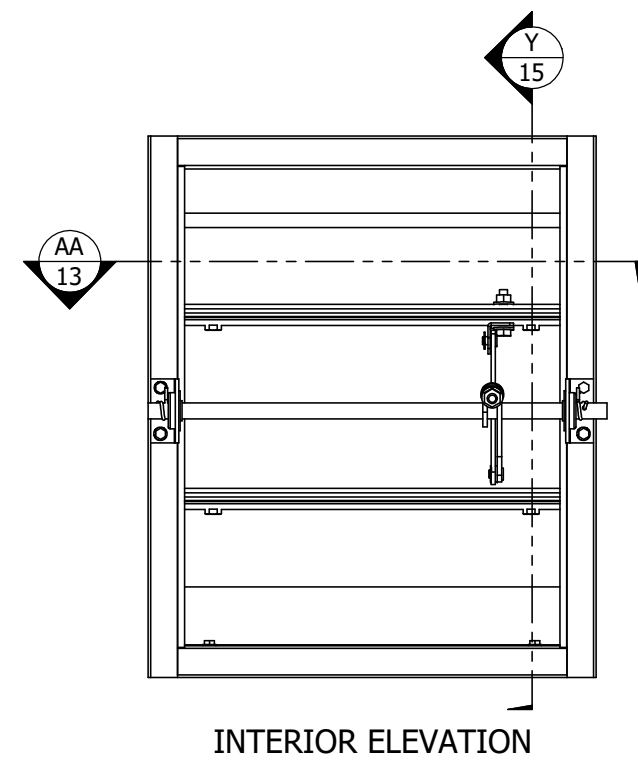
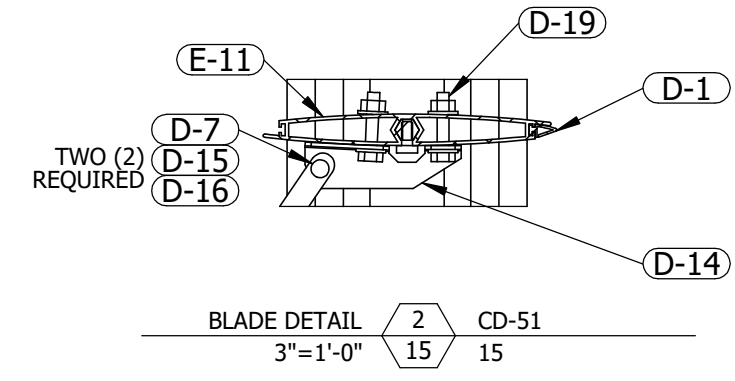
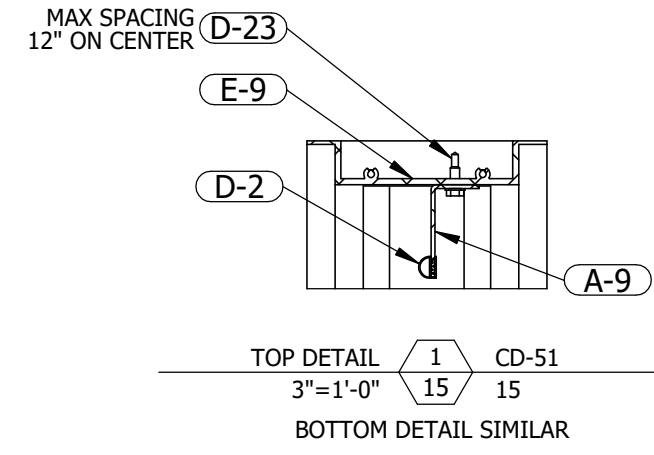
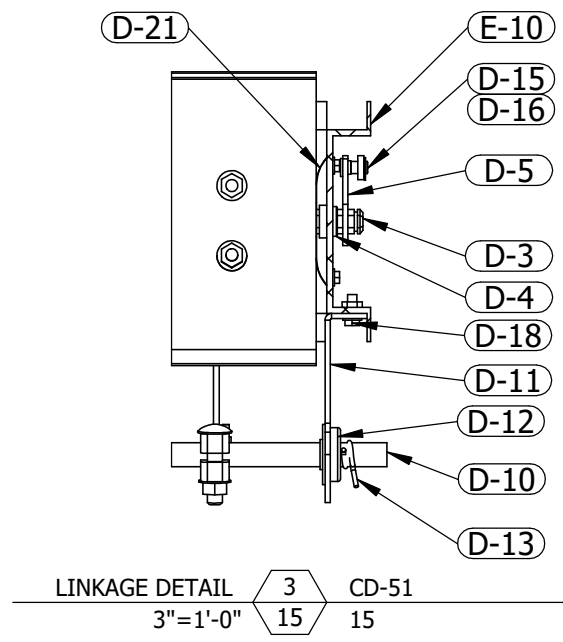
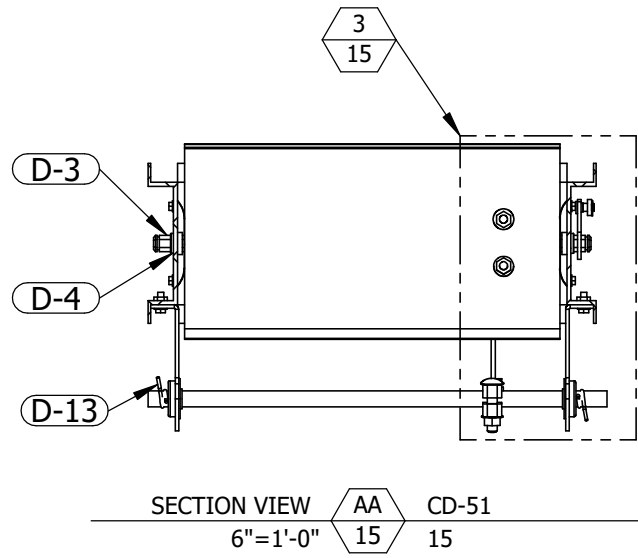
SHEET: 14 of 19

SCALE: 1"=1'-0"

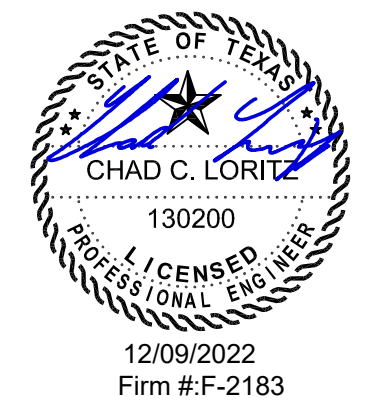
ECD-545-MD TDI

REV.	DESCRIPTION	DATE	DRAWN BY
1	REVISE NOTE 2	12/8/2022	JMR
0	INITIAL RELEASE	6/28/2022	JMR

CD-51 DAMPER



P.E. STAMP



I:\Engineering Library\ECN-EIN\2022\ECN 22-0068 - Create TDI Versions of MD Documentation - ECD_ECV_EDV-545-MD\

REV.	DESCRIPTION	DATE	DRAWN BY
1	REVISE NOTE 2	12/8/2022	JMR
0	INITIAL RELEASE	6/28/2022	JMR

UNLESS OTHERWISE SPECIFIED DIMENSION ARE IN INCHES.
 TOLERANCE UNLESS NOTED:
 X.X ±0.060
 X.XX ±0.030
 X.XXX ±0.010
 ANGLE ±1°
 FRACTION ±1/16
 MAX HOLE BREAKOUT:
 15% OF MATERIAL THICKNESS

5101 Blue Mound Road
 Fort Worth, Texas 76106
 Phone: 817-509-2300
 Fax: 817-831-3110

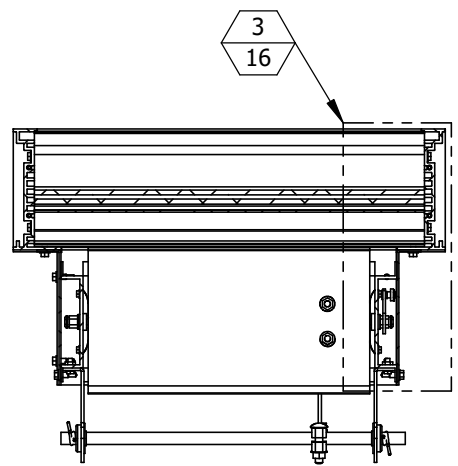
THIRD ANGLE PROJECTION

PCI INDUSTRIES DOING BUSINESS AS

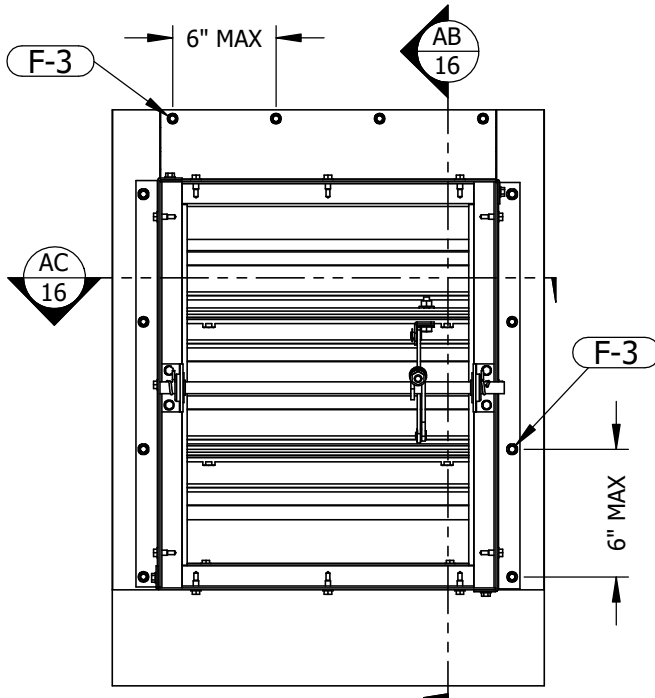
POTTORFF

DRAWING DESCR: CD-51 DAMPER				
PROJECT: ECD-545-MD				
LOCATION:				
CUSTOMER:				
PROJ. MGR.:		DRAWN BY: JMR		
DATE: 6/28/2022	CHK'D BY: NW	ORDER NUMBER	P.O. NUMBER	DRAWING NUMBER
SHEET: 15 of 19	SCALE: 2"=1'-0"			ECD-545-MD TDI

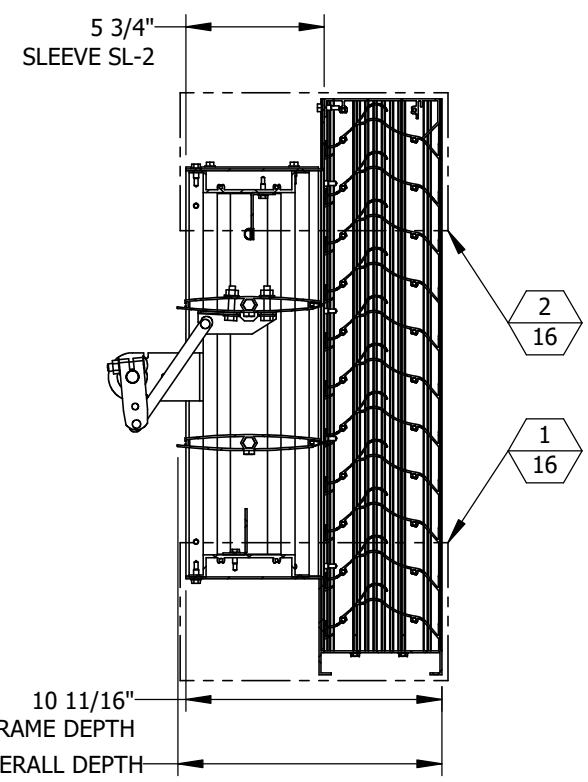
ECD-545-MD WITH CD-51 DAMPER



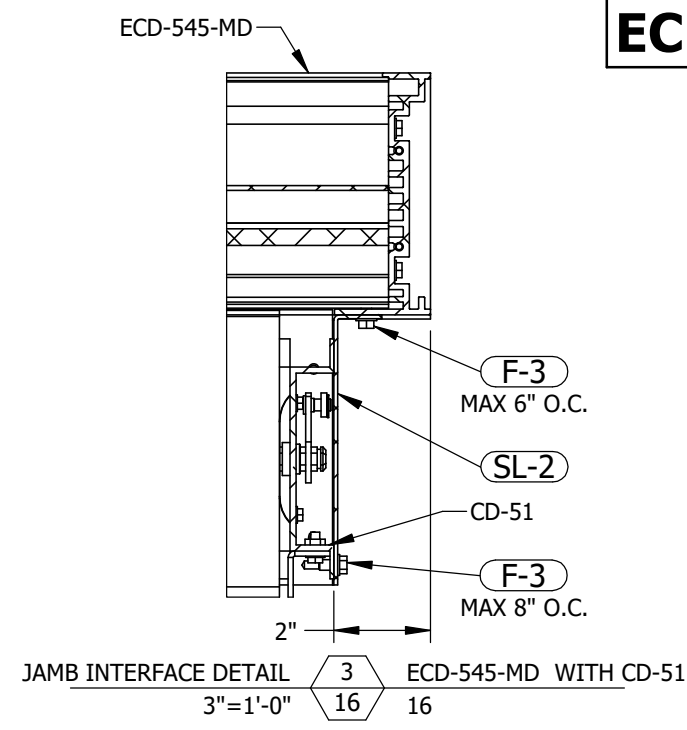
SECTION VIEW $\frac{AC}{16}$ ECD-545-MD WITH CD-51
1-1/2"=1'-0" 16



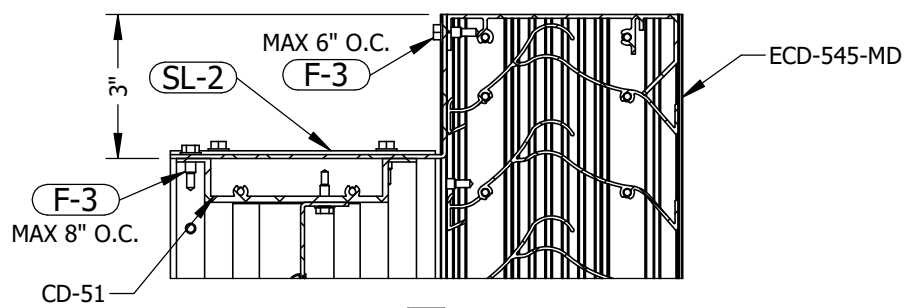
INTERIOR ELEVATION



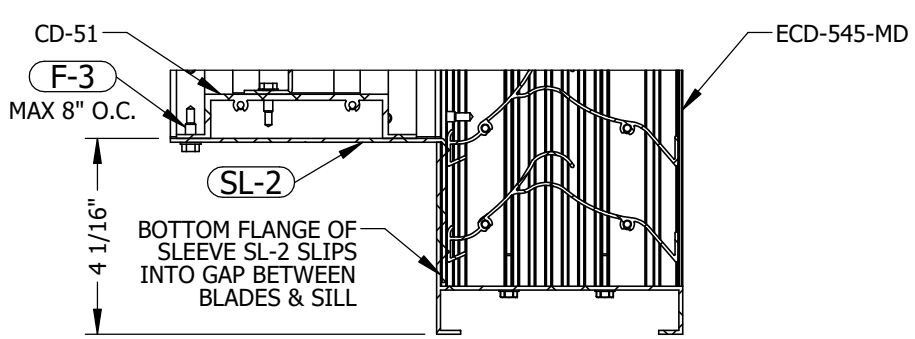
SECTION VIEW $\frac{AB}{16}$ ECD-545-MD WITH CD-51
1-1/2"=1'-0" 16



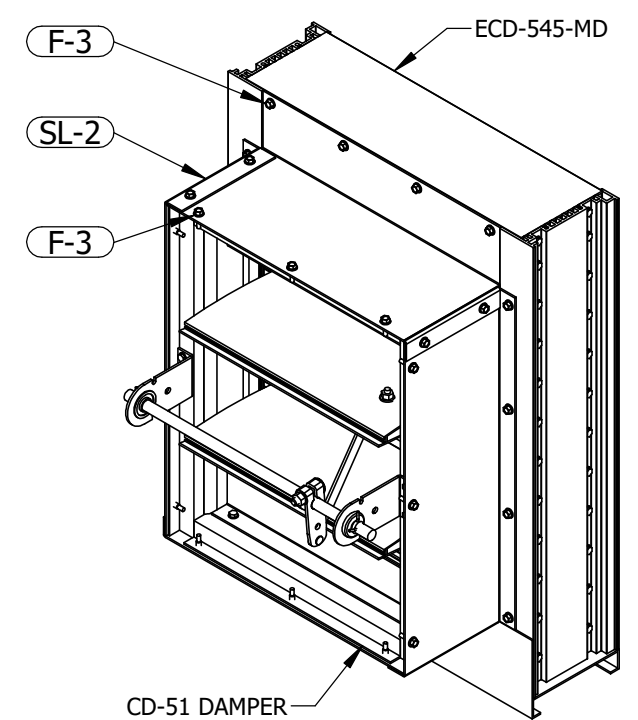
JAMB INTERFACE DETAIL $\frac{3}{16}$ ECD-545-MD WITH CD-51
3"=1'-0" 16



TOP INTERFACE DETAIL $\frac{2}{16}$ ECD-545-MD WITH CD-51
3"=1'-0" 16



BOTTOM INTERFACE DETAIL $\frac{1}{16}$ ECD-545-MD WITH CD-51
3"=1'-0" 16



CD-51 DAMPER MECHANICALLY FASTENED TO SLEEVE SL-2

P.E. STAMP



UNLESS OTHERWISE SPECIFIED DIMENSION ARE IN INCHES.
TOLERANCE UNLESS NOTED:
X.X ±0.060
X.XX ±0.030
X.XXX ±0.010
ANGLE ±1°
FRACTION ±1/16
MAX HOLE BREAKOUT: 15% OF MATERIAL THICKNESS

5101 Blue Mound Road
Fort Worth, Texas 76106
Phone: 817-509-2300
Fax: 817-831-3110
THIRD ANGLE PROJECTION

PCI INDUSTRIES DOING BUSINESS AS
POTTORFF

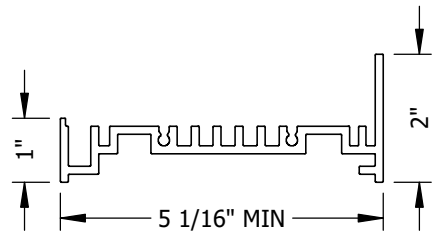
DRAWING DESCR: ECD-545-MD WITH CD-51 DAMPER				
PROJECT: ECD-545-MD				
LOCATION:				
CUSTOMER:				
PROJ. MGR.:		DRAWN BY: JMR		
DATE: 6/28/2022	CHK'D BY: NW	ORDER NUMBER	P.O. NUMBER	DRAWING NUMBER
SHEET: 16 of 19	SCALE: 1-1/2"=1'-0"	ECD-545-MD TDI		

I:\Engineering Library\ECN-EIN\2022\ECN 22-0068 - Create TDI Versions of MD Documentation - ECD_ECV_EDV-545-MD

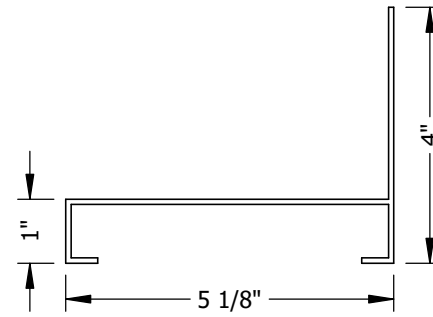
REV.	DESCRIPTION	DATE	DRAWN BY
1	REVISE NOTE 2	12/8/2022	JMR
0	INITIAL RELEASE	6/28/2022	JMR

I:\Engineering Library\ECN-EIN\2022\ECN 22-0068 - Create TDI Versions of MD Documentation - ECD, ECV, EDV-545-MD

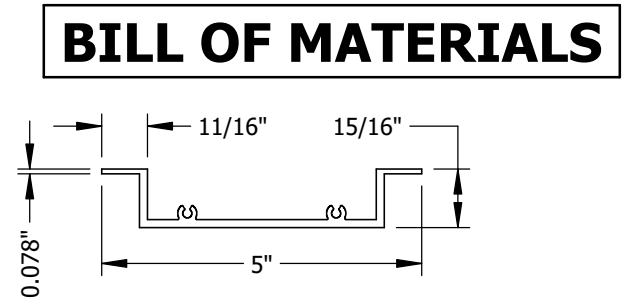
PART NO: E-1
 PART NAME: LOUVER JAMB
 MATERIAL: 0.125" THICK
 6063-T5 EXTRUDED
 ALUMINUM
 SCALE: 4"=1'-0"



PART NO: E-5
 PART NAME: LOUVER SILL
 MATERIAL: 0.081" THICK
 6063-T5 EXTRUDED
 ALUMINUM
 SCALE: 4"=1'-0"

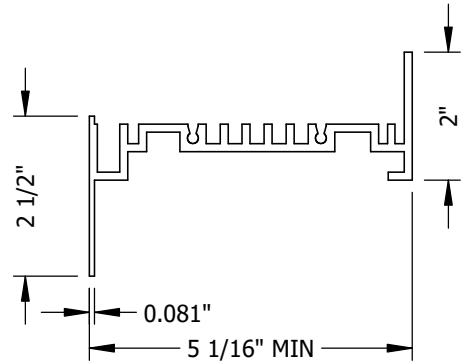


PART NO: E-9
 PART NAME: DAMPER HEAD, SILL
 MATERIAL: 0.125" THICK
 6063-T5 EXTRUDED
 ALUMINUM
 SCALE: 4"=1'-0"

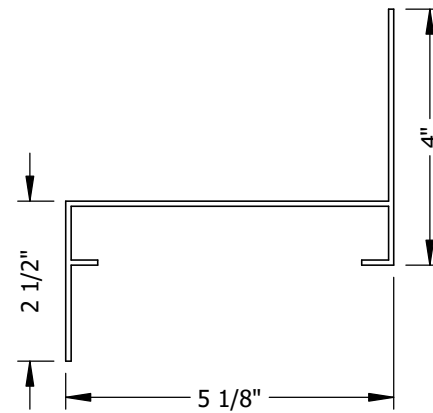


BILL OF MATERIALS

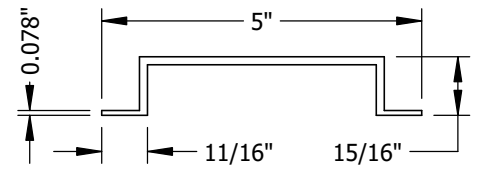
PART NO: E-2
 PART NAME: LOUVER JAMB,
 FLANGED
 MATERIAL: 0.125" THICK
 6063-T5 EXTRUDED
 ALUMINUM
 SCALE: 4"=1'-0"



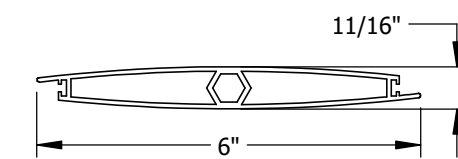
PART NO: E-6
 PART NAME: LOUVER SILL,
 FLANGED
 MATERIAL: 0.081" THICK
 6063-T5 EXTRUDED
 ALUMINUM
 SCALE: 4"=1'-0"



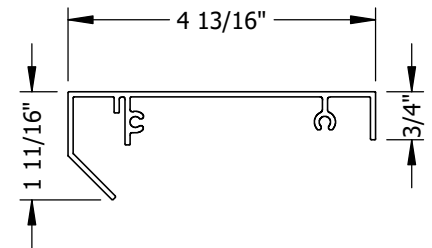
PART NO: E-10
 PART NAME: DAMPER JAMB
 MATERIAL: 0.125" THICK
 6063-T5 EXTRUDED
 ALUMINUM
 SCALE: 4"=1'-0"



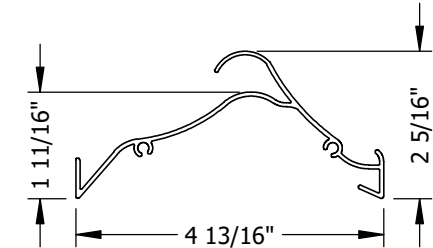
PART NO: E-11
 PART NAME: DAMPER BLADE, FULL
 MATERIAL: 0.070" THICK
 6063-T5 EXTRUDED
 ALUMINUM
 SCALE: 4"=1'-0"



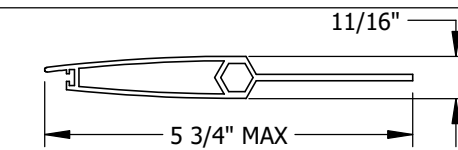
PART NO: E-3
 PART NAME: LOUVER HEAD
 MATERIAL: 0.081" THICK
 6063-T5 EXTRUDED
 ALUMINUM
 SCALE: 4"=1'-0"



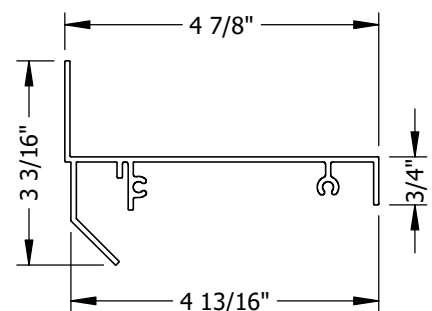
PART NO: E-7
 PART NAME: LOUVER BLADE
 MATERIAL: 0.063" THICK
 6063-T5 EXTRUDED
 ALUMINUM
 SCALE: 4"=1'-0"



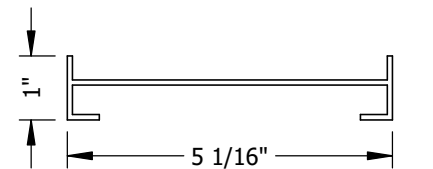
PART NO: E-12
 PART NAME: DAMPER BLADE, HALF
 MATERIAL: 0.070" THICK
 6063-T5 EXTRUDED
 ALUMINUM
 SCALE: 4"=1'-0"



PART NO: E-4
 PART NAME: LOUVER HEAD,
 FLANGED
 MATERIAL: 0.081" THICK
 6063-T5 EXTRUDED
 ALUMINUM
 SCALE: 4"=1'-0"



PART NO: E-8
 PART NAME: ROLLFRAME EXTRUSION
 MATERIAL: 0.081" THICK
 6063-T5 EXTRUDED
 ALUMINUM
 SCALE: 4"=1'-0"



P.E. STAMP



REV.	DESCRIPTION	DATE	DRAWN BY
1	REVISE NOTE 2	12/8/2022	JMR
0	INITIAL RELEASE	6/28/2022	JMR

UNLESS OTHERWISE SPECIFIED
 DIMENSION ARE IN INCHES.
 TOLERANCE UNLESS NOTED:
 X.X ±0.060
 X.XX ±0.030
 X.XXX ±0.010
 ANGLE ±1°
 FRACTION ±1/16
 MAX HOLE BREAKOUT:
 15% OF MATERIAL THICKNESS

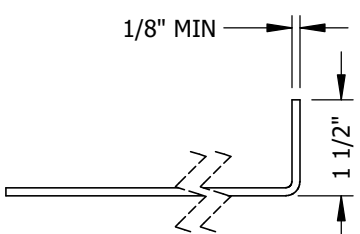
5101 Blue Mound Road
 Fort Worth, Texas 76106
 Phone: 817-509-2300
 Fax: 817-831-3110
 THIRD ANGLE PROJECTION

PCI INDUSTRIES DOING BUSINESS AS
POTTORFF

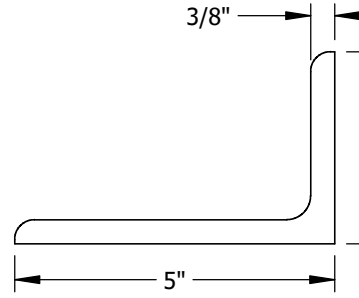
DRAWING DESCR: BILL OF MATERIALS			
PROJECT: ECD-545-MD			
LOCATION:			
CUSTOMER:			
PROJ. MGR.:		DRAWN BY: JMR	
DATE: 6/28/2022	CHK'D BY: NW	ORDER NUMBER	P.O. NUMBER
SHEET: 17 of 19		SCALE: AS NOTED	
		DRAWING NUMBER ECD-545-MD TDI	

I:\Engineering Library\ECN-EIN\2022\ECN 22-0068 - Create TDI Versions of MD Documentation - ECD, ECV, EDV-545-MD\

PART NO: SL-1
 PART NAME: SLEEVE, LOUVER
 MATERIAL: MIN 1/8" THICK 5052-H32 SHEET ALUMINUM
 SCALE: 4"=1'-0"

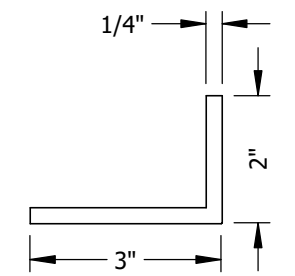


PART NO: A-3
 PART NAME: SHELF ANGLE, MULLION
 MATERIAL: 5" X 3" X 3/8" X 24" LONG 6061-T6 EXTRUDED ALUMINUM
 SCALE: 4"=1'-0"

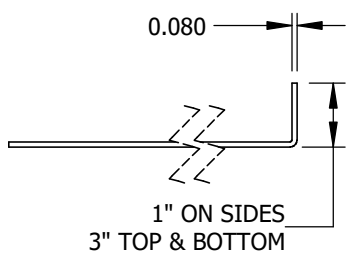


BILL OF MATERIALS

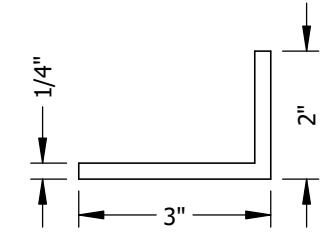
PART NO: A-7
 PART NAME: SUPPORT ANGLE, SHAPES
 MATERIAL: 3" X 2" X 1/4" X 4" LONG 6063-T5 EXTRUDED ALUMINUM
 SCALE: 4"=1'-0"



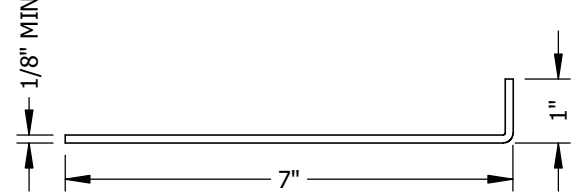
PART NO: SL-2
 PART NAME: SLEEVE, DAMPER
 MATERIAL: 0.080 THICK 5052-H32 SHEET ALUMINUM
 SCALE: 4"=1'-0"



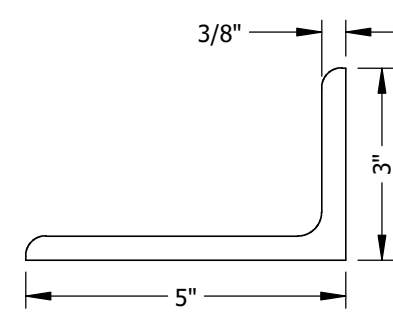
PART NO: A-4
 PART NAME: CONTINUOUS SUPPORT ANGLE
 MATERIAL: 3" X 2" X 1/4" 6063-T5 EXTRUDED ALUMINUM
 SCALE: 4"=1'-0"



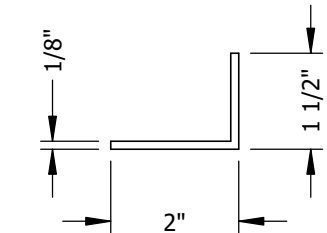
PART NO: A-8
 PART NAME: MULLION ATTACHMENT ANGLE
 MATERIAL: MIN. 1/8" THICK 5052-H32 SHEET ALUMINUM
 SCALE: 4"=1'-0"



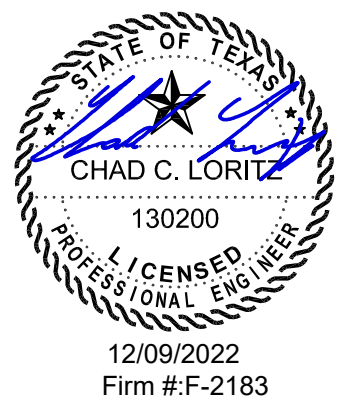
PART NO: A-1
 PART NAME: CLIP ANGLE, MULLION
 MATERIAL: 5" X 3" X 3/8" X 10" LONG 6061-T6 EXTRUDED ALUMINUM
 SCALE: 4"=1'-0"



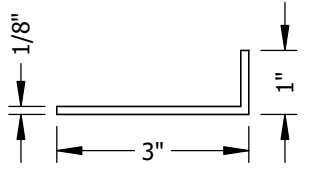
PART NO: A-5
 PART NAME: RETAINING ANGLE
 MATERIAL: 2" X 1-1/2" X 1/8" 6063-T5 EXTRUDED ALUMINUM
 SCALE: 4"=1'-0"



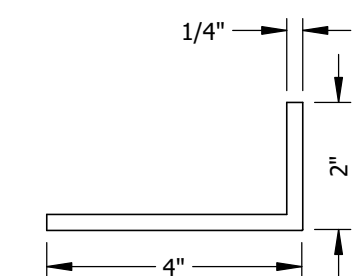
P.E. STAMP



PART NO: A-2
 PART NAME: CONTINUOUS ANGLE
 MATERIAL: 3" X 1" X 1/8" 6063-T5 EXTRUDED ALUMINUM
 SCALE: 4"=1'-0"



PART NO: A-6
 PART NAME: CLIP ANGLE, SHAPES
 MATERIAL: 4" X 2" X 1/4" X 4" LONG 6063-T5 EXTRUDED ALUMINUM
 SCALE: 4"=1'-0"

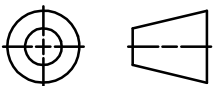


REV.	DESCRIPTION	DATE	DRAWN BY
1	REVISE NOTE 2	12/8/2022	JMR
0	INITIAL RELEASE	6/28/2022	JMR

UNLESS OTHERWISE SPECIFIED DIMENSION ARE IN INCHES.
 TOLERANCE UNLESS NOTED:
 X.X ±0.060
 X.XX ±0.030
 X.XXX ±0.010
 ANGLE ±1°
 FRACTION ±1/16
 MAX HOLE BREAKOUT:
 15% OF MATERIAL THICKNESS

5101 Blue Mound Road
 Fort Worth, Texas 76106
 Phone: 817-509-2300
 Fax: 817-831-3110

THIRD ANGLE PROJECTION



PCI INDUSTRIES DOING BUSINESS AS

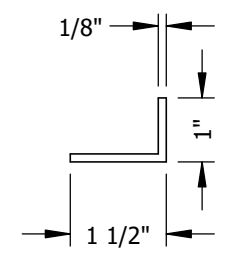
POTTORFF

DRAWING DESCR: BILL OF MATERIALS				
PROJECT: ECD-545-MD				
LOCATION:				
CUSTOMER:				
PROJ. MGR.:		DRAWN BY: JMR		
DATE: 6/28/2022	CHK'D BY: NW	ORDER NUMBER	P.O. NUMBER	DRAWING NUMBER
SHEET: 18 of 19	SCALE: AS NOTED			ECD-545-MD TDI

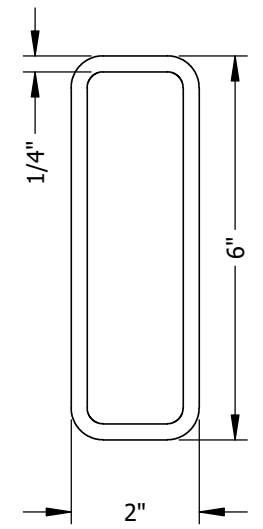
I:\Engineering Library\ECN-EIN\2022\ECN 22-0068 - Create TDI Versions of MD Documentation - ECD, ECV, EDV-545-MD\

BILL OF MATERIALS

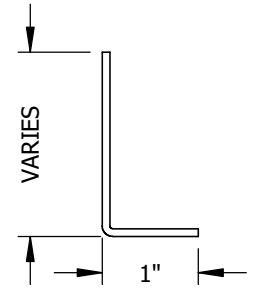
PART NO: SL-1A
 PART NAME: SLEEVE ATTACHMENT ANGLE
 MATERIAL: 1-1/2" X 1" X 1/8" 6063-T5 EXTRUDED ALUMINUM
 SCALE: 4"=1'-0"



PART NO: S-1
 PART NAME: TUBE, MULLION SUPPORT
 MATERIAL: 6" X 2" X 1/4" HSS
 ASTM A500 Gr. B
 Fy= 46 KSI
 SCALE: 4"=1'-0"



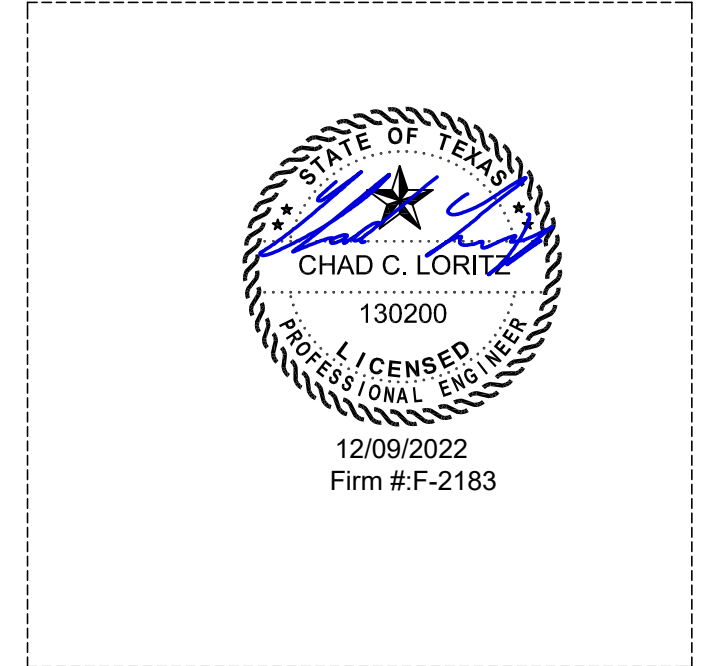
PART NO: A-9
 PART NAME: DAMPER STOP
 MATERIAL: 0.080" THICK 5052-H32 SHEET ALUMINUM
 SCALE: 6"=1'-0"



MISCELLANEOUS FASTENERS	
PART NO.	DESCRIPTION
F-1	#10-24 X 3/4" LONG, HWH, 410 SST, 'F' POINT MACHINE SCREW
F-2	#10-16 X 2" LONG, HWH, 410 SST, TEK SELF-DRILLING SCREW
F-3	#12-14 X 3/4" LONG, HWH, 410 SST, TEK SELF-DRILLING SCREW
F-4	#12-14 X 1" LONG, HWH, TEK SELF-DRILLING SCREW, 300-SERIES SST
F-5	5/8-11 X 4" LONG, 18-8 SST, HEX BOLT, NUT, AND TWO (2) FLAT WASHERS
F-6	5/8-11 X 2" LONG, 18-8 SST, HEX BOLT, NUT, AND TWO (2) FLAT WASHERS
F-7	3/8" X 4" DEWALT SCREW-BOLT+, GALV. FINISH
F-8	5/8" X 4" DEWALT SCREW-BOLT+, GALV. FINISH
F-9	5/8" X 6" DEWALT SCREW-BOLT+, GALV. FINISH
F-11	1/4-14 X 1" LONG, HWH, TEK SELF-DRILLING SCREW, 300-SERIES SST
F-12	1/2" X 3-1/2" LONG HEX LAG BOLT AND FLAT WASHER, 300-SERIES SST

MISCELLANEOUS DAMPER PARTS		
PART NO.	DESCRIPTION	MATERIAL
D-1	BLADE SEAL	PVC
D-2	STOP SEAL	PVC
D-3	HEX AXLE	ZINC-PLATED STEEL
D-4	HEX BUSHING	304 SST
D-5	PARALLEL CAM	ZINC-PLATED STEEL
D-6	LINK BAR, 1/2" WIDE X 1/8" THICK	GALV. STEEL
D-7	WASHER, 1/4" I.D., 1/2" O.D.	NYLON
D-8	SPRING ARM, 10-GA	GALV. STEEL
D-9	DRIVE ROD, 1/2" WIDE X 1/8" THICK	GALV. STEEL
D-10	JACKSHAFT, 1/2" DIA.	ZINC-PLATED STEEL
D-11	JACKSHAFT BRACKET, 12 GA.	GALV. STEEL
D-12	JACKSHAFT BEARING	STEEL
D-13	JACKSHAFT SPRING CLIP	SPRING STEEL
D-14	DRIVE BRACKET, 14 GA.	GALV. STEEL
D-15	LINKAGE PIN, 1/4"	304 SST
D-16	E-RING, 1/4"	ZINC-PLATED STEEL
D-17	#8-18 X 1" LONG, HWH, NEEDLE POINT SCREW	ZINC-PLATED STEEL
D-18	#10-32 X 1/2" LONG HEX BOLT WITH KEPS NUT	ZINC-PLATED STEEL
D-19	1/4-20 X 1-1/4" LONG HEX BOLT WITH KEPS NUT	ZINC-PLATED STEEL
D-20	1/4-20 X 1/2" LONG HEX BOLT	ZINC-PLATED STEEL
D-21	JAMB SEAL, 2-9/16" X 5/16" X 0.007" THICK	302 SST
D-22	5/16-18 X 1-1/2" LONG CARRIAGE BOLT WITH LOCKNUT	ZINC-PLATED STEEL
D-23	#10-16 X 3/4" LONG, HWH, TEK SELF-DRILLING SCREW	ZINC-PLATED STEEL

P.E. STAMP



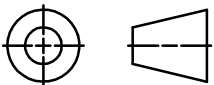
NOTE: ALL INSTALLATION FASTENERS AND ANCHORS SHALL BE OF CORROSION-RESISTANT STEEL (300-SERIES STAINLESS OR GALVANIZED)

REV.	DESCRIPTION	DATE	DRAWN BY
1	REVISE NOTE 2	12/8/2022	JMR
0	INITIAL RELEASE	6/28/2022	JMR

UNLESS OTHERWISE SPECIFIED DIMENSION ARE IN INCHES.
 TOLERANCE UNLESS NOTED:
 X.X ±0.060
 X.XX ±0.030
 X.XXX ±0.010
 ANGLE ±1°
 FRACTION ±1/16
 MAX HOLE BREAKOUT:
 15% OF MATERIAL THICKNESS

5101 Blue Mound Road
 Fort Worth, Texas 76106
 Phone: 817-509-2300
 Fax: 817-831-3110

THIRD ANGLE PROJECTION



PCI INDUSTRIES DOING BUSINESS AS

POTTORFF

DRAWING DESCR: BILL OF MATERIALS				
PROJECT: ECD-545-MD				
LOCATION:				
CUSTOMER:				
PROJ. MGR.:		DRAWN BY: JMR		
DATE: 6/28/2022	CHK'D BY: NW	ORDER NUMBER	P.O. NUMBER	DRAWING NUMBER
SHEET: 19 of 19	SCALE: AS NOTED			ECD-545-MD TDI